

INDUSTRIAL THERMOMETER



7" & 9" Adjustable Angle – Spirit Fill

Miljoco liquid-in-glass thermometers are designed for commercial construction & industrial applications such as piping & air ducts. This instrument represents the accepted worldwide engineering standard for industrial thermometers with die cast aluminum case construction for rugged durability. The blue reading liquid fill with magnifying glass lens provides an accurate and quick response while maintaining environmental safety.

General Specifications

CASE: Precision die cast Aluminum. Green powder coat finish

LENS: Acrylic to 300°F, Glass above 300°F

SCALE: Aluminum with white finish with black markings, V-shaped for optimum readability

TUBE: Blue reading liquid fill with magnifying glass lens.

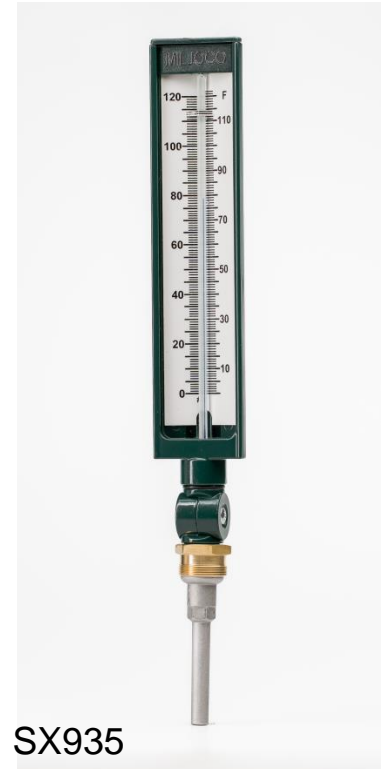
ADJUSTABLE FITTING: Finished to match the case and locked in place with a screw. Provides 180° adjustment in vertical plane and 360° adjustment in horizontal plane.

CONNECTION: 1-1/4"-18 UNF threaded brass coupling nut.

STEM: Aluminum, tapered to fit standard industrial thermowells, packed with heat transfer paste to provide maximum temperature response.

ACCURACY: ±1 scale division

AMBIENT TEMPERATURE: -40 to 140°F (-40 to 60°C).



SX935

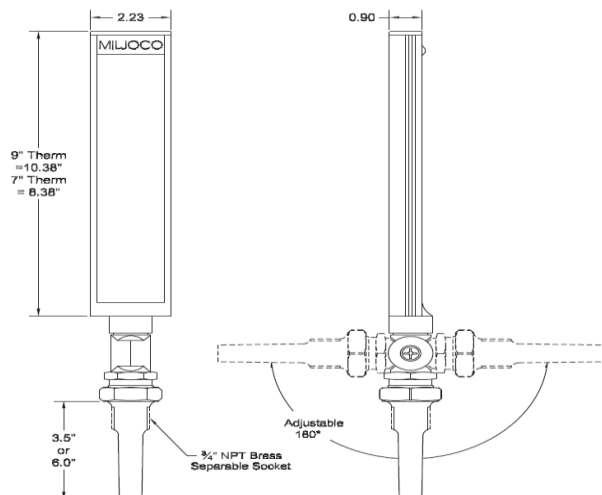
Models

Model	Scale Size	Stem Length	Model	Scale Size	Stem Length
SX735	7"	3½"	SX935	9"	3½"
SX760	7"	6"	SX960	9"	6"

Ranges

Code	Range	°F Scale		°C Scale	
		Fig.	Div.	Fig.	Div.
30	-40 to 110°F	10°	2°	See Dual Scale Ranges Below	
35	0 to 120°F	10°	1°		
75	0 to 160°F	10°	2°		
77	30 to 180°F	10°	2°		
50	30 to 240°F	10°	2°		
60	30 to 300°F	10°	2°		
100	50 to 400°F	25°	5°		
97	-50 to 550°F	50°	5°		
31	-40 to 110°F / -40 to 40°C	20°	2°	10°	1°
36	0 to 120°F / -10 to 50°C	20°	1°	10°	1°
76	0 to 160°F / -15 to 70°C	10°	2°	5°	1°
88	30 to 180°F / 0 to 80°C	10°	2°	5°	1°
51	30 to 240°F / 0 to 115°C	20°	2°	10°	1°
61	30 to 300°F / 0 to 150°C	20°	2°	10°	1°
101	50 to 400°F / 10 to 205°C	50°	5°	10°	2°
102	50 to 550°F / 10 to 288°C	100°	5°	20°	2°

Dimensions (in.)



Options

- Glass Lens
- Air-Duct Stem
- Brass Stem
- Stainless Steel Stem

To Order

S X 9 3 5
Model Number

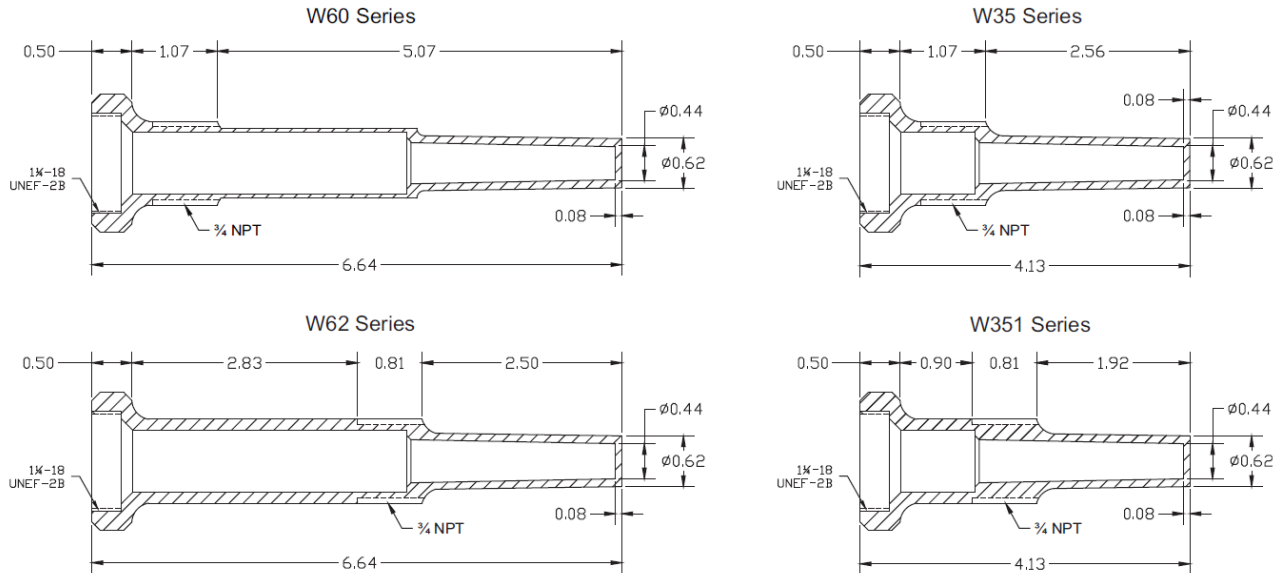
5 0
Range Code

INDUSTRIAL THERMOMETER



Thermowells

Dimensions in inches



These thermowells are designed use with Miljoco liquid-in-glass and solar industrial thermometers. They are intended to separate and protect the thermometer from the process or media being measured and allow for the removal of the thermometer without shutting down the process. They are readily available in brass, lead-free brass, type 304 stainless steel, or type 316 stainless steel construction to suit a wide range of applications. Other materials are available on request - consult factory.

The thermowell should be primed before thermometer installation with a heat transfer medium such as oil, graphite or paste to provide optimal accuracy and response time.

Models & Dimensions (in.)

Stem Length "S"	Process Conn. "A"	Immersion Length "U"	Lagging Ext. "T"	Material		
				Brass	304SS	316SS
3½"	¾" NPT	2.50"	None	W35B	W35304	W35316
3½"	¾" NPT	1.50"	1.00"	W351B	W351304	W351316
6"	¾" NPT	5.00"	None	W60B	W60304	W60316
6"	¾" NPT	2.50"	2.00"	W62B	W62304	W62316

Pressure/Temperature Ratings

Material	Temperature						
	70°F	200°F	400°F	600°F	800°F	1000°F	1200°F
Brass	1600 psi	1400 psi	300 psi	-	-	-	-
304SS	2300 psi	2000 psi	1800 psi	1800 psi	1700 psi	1500 psi	500 psi
316SS	2300 psi	2300 psi	2100 psi	2000 psi	2000 psi	1700 psi	800 psi

Options

- WCCB: Thermowell cap & lanyard
- Available in Lead-Free Brass

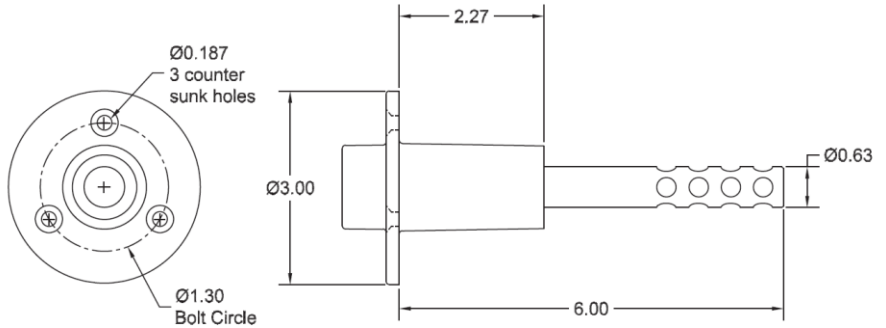
INDUSTRIAL THERMOMETER



Options & Accessories

Air-Duct Stem

Miljoco offers an air-duct stem on both the liquid-in-glass and solar digital thermometers. This stem is designed to provide maximum accuracy and response time for thermometers that are to be installed in ducts and other air-temperature measurement applications.



Model	Scale Size
SX7AD06	7"
SX9AD06	9"
CDX9AD06	Solar

Refer to pages ___ for full dimensional drawings

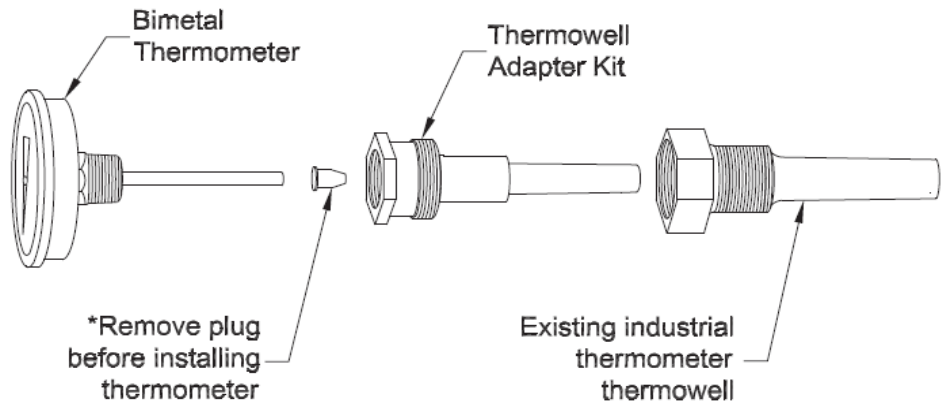
Optional Features & Accessory Items

Code	Feature	Description
G	Glass Lens	Double strength glass lens on Models SX7 & SX9.
BS	Brass Stem	Brass Stem on Models SX7 & SX9.
SS	Stainless Steel Stem	304 stainless steel stem on Models SX7 & SX9.
46-1	Waterproof Cover	Clear waterproof cover for Model CDX9

Specify the optional feature code when ordering. Stainless steel and brass connection bushings are also available for use with optional stainless steel and brass stems – consult factory for details.

Thermowell Adapter Kit

This easy-to-use adapter kit is designed to fit precisely within an industrial thermometer well. Simply thread the adapter into the well, remove the plug, and install a Miljoco Bimetal Thermometer of the appropriate stem length. The adapter kit is furnished complete with heat transfer paste to provide the fastest response time of the thermometer.



Model	Industrial Thermowell Number	Bimetal Thermometer Stem Length
BK35	W35_ / W351_	4"
BK60	W60_ / W62_	6"

SX7-9 Series



Improving the world, one measurement at a time.™

dwyeromega.com