

Series V4

W.E. Anderson Flotect® Vane Operated Flow Switch



Features/Benefits

- Unique magnetically actuated switching design gives superior performance
- Features a free-swinging vane which attracts a magnet within the solid metal switch body, actuating a snap switch by means of a simple lever arm with no bellows, springs, or seals to fail
- Leak proof body machined from bar stock
- Electrical assembly can be easily replaced without removing the unit from installation so that the process does not have to be shut down
- Installs directly and easily into pipeline with a thredolet, tee, or flange (see application drawings)
- High pressure rating of 1000 psig (69 bar) with the brass body and 2000 psig (138 bar) with the 316 SS body
- Choice of custom vane calibrated for your application, Model V4, or field adjustable multilayer vane, Model V4-2-U (see set point chart)

Applications

- Protects pumps, motors and other equipment against low or no flow
- Controls sequential operation of pumps
- Automatically starts auxiliary pumps and engines
- Stops liquid cooled engines, machines and processing when coolant flow is interrupted
- Shuts down burner when air flow through heating coil fails
- Controls dampers according to flow

Description

The Series V4 Flotect® Vane Operated Flow Switch is rugged and reliable, ideal for automatically protecting equipment and pipeline systems against damage from reduction or loss of flow. Time tested in thousands of pipeline installations and processing plants around the world this Series is Weatherproof, designed to meet NEMA 4 and Explosion-proof (listing included in specifications). This series can be used in pipes 1-1/2 " and up.

Specifications

Service	Gases or liquids compatible with wetted materials.
Wetted Materials	Vane: 316 SS; Body: Brass or 316 SS standard; Magnet keeper: 430 SS standard, 316 SS optional; Options: Other materials also available, consult factory (e.g. PVC, hastelloy, nickel, monel, titanium).

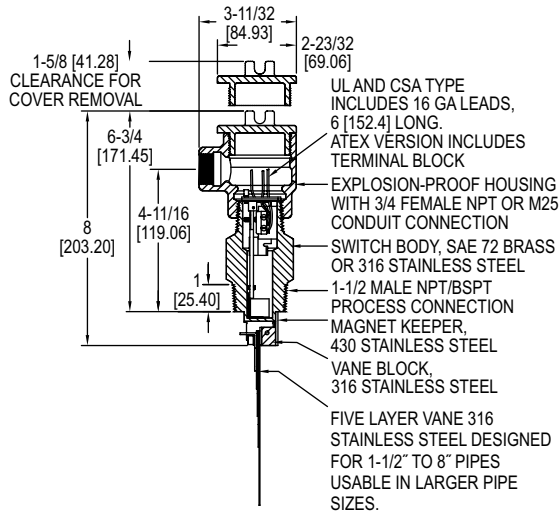


Temperature Limit		Standard: -4 °F to 275 °F (-20 °C to 135 °C).
	Ambient	MT high temperature [not UL, CSA, ATEX, or IECEx]: -4 °F to 400 °F (-20 °C to 205 °C). ATEX and IECEx: -4 °F to 163 °F (-20 °C to 73 °C).
	Process	All options: -4 °F to 163 °F (-20 °C to 73 °C).
		Note: ATEX and IECEx units only: The temperature class is determined by the maximum ambient and or process temperature. Units are intended to be used in ambient of $-4\text{ °F} \leq T_{\text{amb}} \leq 163\text{ °F}$. Units may be used in proves temperatures up to 271 °F providing the enclosure and switch body temperature do not exceed 163 °F. The standard temperature class is T6 process temp $\leq 163\text{ °F}$
Pressure Limit		Brass body 1000 psig (69 bar), 316 SS body 2000 psig (138 bar), optional 5000 psig (345 bar) available with 316 SS body and SPDT switch only.
Enclosure Rating		Weatherproof and Explosion-proof. **Listed with UL and CSA for Class I, Groups C and D; Class II, Groups E, F, and G. ATEX CE 2813 Ex II 2 G Ex db IIB T6 Gb -4 °F $\leq T_{\text{amb}} \leq 163\text{ °F}$. -4 °F \leq Process Temp $\leq 163\text{ °F}$. EU-Type Certificate No.: KEMA 03ATEX2383. ATEX Standards: EN 60079-0:2012+A11:2013; EN 60079-1:2014. IECEx Certified: For Ex db IIB T6 Gb -4 °F $\leq T_{\text{amb}} \leq 163\text{ °F}$. -4 °F \leq Process Temp $\leq 163\text{ °F}$. IECEx Certificate of Conformity: IECEx DEK 11.0071. IECEx Standards: IEC 60079-0:2011; IEC 60079-1:2014. Zone I. Also FM approved.
Switch Type		SPDT snap switch standard, DPDT snap switch optional.
Electrical Rating		UL, FM, ATEX and IECEx models 10 A @ 125/250 VAC (V~). CSA models: 5 A @ 125/250 VAC (V~); 5 A res., 3 A ind. @ 30 VDC (V---). MV option: 1 A @125 VAC (V~); 1 A res., .5 A ind. @ 30 VDC (V---). MT option: 5 A @ 125/250 VAC (V~). [MT and MV option not UL, CSA, FM, ATEX or IECEx].
Electrical Connections		UL and CSA models: 16 AWG, 6 " (152 mm) long. ATEX and IECEx unit: Terminal block.
Conduit Connection		3/4 " female NPT standard or M25 with -BSPT option.

Process Connection	1-1/2 " male NPT or 1-1/2 " male BSPT.
Mounting Orientation	Within 5° of vertical for proper operation. Units for horizontal installation (vertical pipe with up flow) available.
Set Point Adjustment	For universal vane: five vane combinations.
Weight	4 lb 8 oz (1.9 kg).
Compliance	ATEX, CE, CSA, FM, IECEx, UL**.
**No housing option (-NH) has no approvals.	



Dimensions and Wiring Diagram



Ordering Guide

Use the **bold** characters from the chart below to construct a product code.

	V4	-2	-U	-NH	-D	
SERIES						OPTIONS
V4: Flotect® vane operated flow switch						-D: DPDT contacts
BODY						-MV: Gold plated contacts, options for dry circuits*
-2: Short style brass body						-MT: High temperature, option rated 400°F (204°C)*
-SS: 316 SS (with 430 SS magnet keeper)						-TRI: Increasing flow time delay relay option with 2 SPDT contacts, adjustable from 0-1 to 0-31 minutes*
VANE						-TRD: Decreasing flow time delay relay option with 2 SPDT contacts, adjustable from 0-1 to 0-31 minutes*
-U: Universal						-316: 316 SS magnet keeper, option to replace standard 430 SS
BLANK: Custom						-V: Vertical up flow, option for upward flow in vertical pipe
HOUSING						-AT: ATEX compliant construction
BLANK: With housing						-IEC: IECEx certified construction
-NH: No housing (has no approvals)						-BSPT: Male BSPT process connection and M25 conduit connection

*See electrical rating in specification, no listings or approvals.

