



omega.com info@omega.com



Servicing North America:

**U.S.A.
Headquarters:**

Omega Engineering, Inc.
Toll-Free: 1-800-826-6342 (USA & Canada only)
Customer Service: 1-800-622-2378 (USA & Canada only)
Engineering Service: 1-800-872-9436 (USA & Canada only)
Tel: (203) 359-1660 Fax: (203) 359-7700
e-mail: info@omega.com

For Other Locations Visit omega.com/worldwide

The information contained in this document is believed to be correct, but OMEGA accepts no liability for any errors it contains, and reserves the right to alter specifications without notice.

WARRANTY / DISCLAIMER

OMEGA ENGINEERING, INC. warrants this unit to be free of defects in materials and workmanship for a period of 13 months from date of purchase. OMEGA's Warranty adds an additional one (1) month grace period to the normal one (1) year product warranty to cover handling and shipping time. This ensures that OMEGA's customers receive maximum coverage on each product.

If the unit malfunctions, it must be returned to the factory for evaluation. OMEGA's Customer Service Department will issue an Authorized Return (AR) number immediately upon phone or written request. Upon examination by OMEGA, if the unit is found to be defective, it will be repaired or replaced at no charge. OMEGA's WARRANTY does not apply to defects resulting from any action of the purchaser, including but not limited to mishandling, improper interfacing, operation outside of design limits, improper repair, or unauthorized modification. This WARRANTY is VOID if the unit shows evidence of having been tampered with or shows evidence of having been damaged as a result of excessive corrosion; or current, heat, moisture or vibration; improper specification; misapplication; misuse or other operating conditions outside of OMEGA's control. Components in which wear is not warranted, include but are not limited to contact points, fuses, and triacs.

OMEGA is pleased to offer suggestions on the use of its various products. However, OMEGA neither assumes responsibility for any omissions or errors nor assumes liability for any damages that result from the use of its products in accordance with information provided by OMEGA, either verbal or written. OMEGA warrants only that the parts manufactured by the company will be as specified and free of defects. OMEGA MAKES NO OTHER WARRANTIES OR REPRESENTATIONS OF ANY KIND WHATSOEVER, EXPRESSED OR IMPLIED, EXCEPT THAT OF TITLE, AND ALL IMPLIED WARRANTIES INCLUDING ANY WARRANTY OF MERCHANTABILITY AND FITNESS FOR A PARTICULAR PURPOSE ARE HEREBY DISCLAIMED. LIMITATION OF LIABILITY: The remedies of purchaser set forth herein are exclusive, and the total liability of OMEGA with respect to this order, whether based on contract, warranty, negligence, indemnification, strict liability or otherwise, shall not exceed the purchase price of the component upon which liability is based. In no event shall OMEGA be liable for consequential, incidental or special damages.

CONDITIONS: Equipment sold by OMEGA is not intended to be used, nor shall it be used: (1) as a "Basic Component" under 10 CFR 21 (NRC), used in or with any nuclear installation or activity; or (2) in medical applications or used on humans. Should any Product(s) be used in or with any nuclear installation or activity, medical application, used on humans, or misused in any way, OMEGA assumes no responsibility as set forth in our basic WARRANTY/DISCLAIMER language, and, additionally, purchaser will indemnify OMEGA and hold OMEGA harmless from any liability or damage whatsoever arising out of the use of the Product(s) in such a manner.

RETURN REQUESTS/INQUIRIES

Direct all warranty and repair requests/inquiries to the OMEGA Customer Service Department. BEFORE RETURNING ANY PRODUCT(S) TO OMEGA, PURCHASER MUST OBTAIN AN AUTHORIZED RETURN (AR) NUMBER FROM OMEGA'S CUSTOMER SERVICE DEPARTMENT (IN ORDER TO AVOID PROCESSING DELAYS). The assigned AR number should then be marked on the outside of the return package and on any correspondence. The purchaser is responsible for shipping charges, freight, insurance and proper packaging to prevent breakage in transit.

FOR WARRANTY RETURNS, please have the following information available BEFORE contacting OMEGA:

1. Purchase Order number under which the product was PURCHASED,
2. Model and serial number of the product under warranty, and
3. Repair instructions and/or specific problems relative to the product.

OMEGA's policy is to make running changes, not model changes, whenever an improvement is possible. This affords our customers the latest in technology and engineering. OMEGA is a trademark of OMEGA ENGINEERING, INC. ©Copyright 2018 OMEGA ENGINEERING, INC. All rights reserved. This document may not be copied, photocopied, reproduced, translated, or reduced to any electronic medium or machine-readable form, in whole or in part, without the prior written consent of OMEGA ENGINEERING, INC.

FOR NON-WARRANTY REPAIRS, consult OMEGA for current repair charges. Have the following information available BEFORE contacting OMEGA:

1. Purchase Order number to cover the COST of the repair,
2. Model and serial number of the product, and
3. Repair instructions and/or specific problems relative to the product.

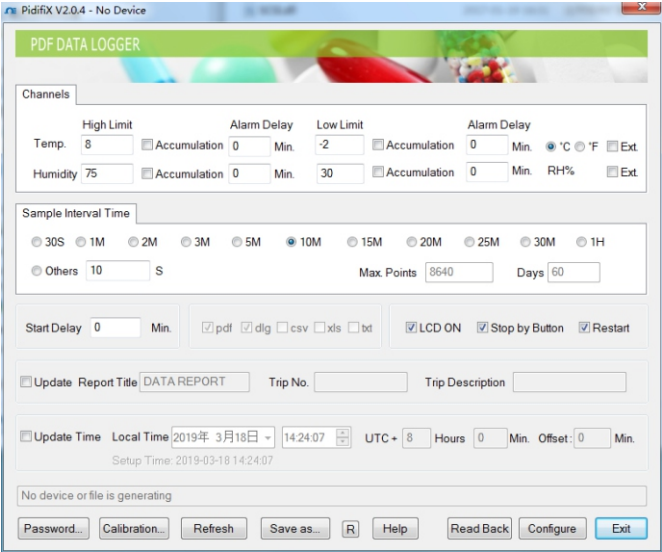
Data Logger

SOFTWARE
GUIDE

Shop online at omega.com e-mail: info@omega.com
For latest product manuals: www.omegamanual.info

CONFIGURATION SOFTWARE

Please download the software "PidifiX" from website or consult your supplier to get any help. Run *.exe file to install the software and then the software shortcut "PidifiX" will be shown on OS's desktop. Run the Pidifix as below.



Channels

-High and Low Limit. To set high and low limit and violation events will happen when exceeding the set limit.
-Alarm Delay. when limit violation events happen, alarm will happen after the set alarm delay time.
-Accumulation. if unselected, it will be single-type, and alarm will happen after set alarm delay. And if limit violation events removed before this delay, alarm won't happen. If selected, alarm will happen when the total time of the violation events exceeds the set alarm delay.

Report

User can set PDF report title, trip no. and description.

Time and Zone

User can set time zone according to user's country.

Read Back

Click this button to read the latest configuration from logger.

Configure

After finish all settings, Click this button to setup

- Temperature unit: °C/°F To choose between centigrade and Fahrenheit temperature.
- Ext. If data logger needs to use an external probe, select it.

Sample Interval Time

To choose sample interval. The elapsed days will be calculated based on the sample interval and maximum memory capacity.

Start Delay

This decide start time actually. Once pressing button to start, data logger will start after the start delay time.

LCD ON

for those data loggers with LCD, user can select it to enable LCD display.

Stop by Button

If selected, data logger can be stopped by button.
Note: user uses it to avoid that logger be stopped by wrong operations.

Restart

If selected, data logger can be restarted without software configuration.
Note: once restart the logger, it will delete all recorded data. Before operate this, user has to confirm the data have been saved.

File Type

The data logger supports to generate pdf, dlg(raw file), csv, xls or txt directly, and user can select the file type that will be generated.

Save as

User can click the button to use the software(Pidifi) to get csv, xls, txt and dlg(raw file) file.

Refresh

Click this button to refresh shown information and status for current logger.

Calibration

Click this button to enter into calibration mode. for more details, please contact dealers.

Password

User can set password for current logger. Once password set, user must input right password to access.