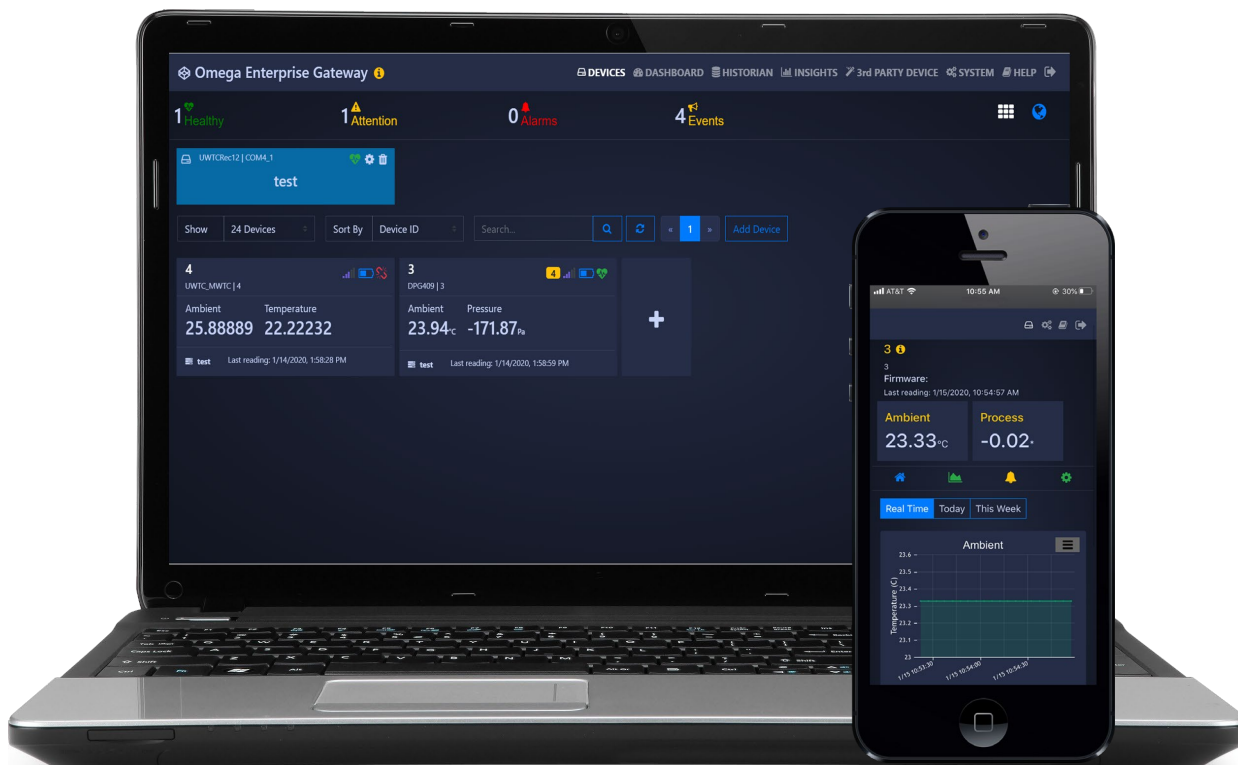


# Omega Enterprise Gateway 2.1

## Data Tool User's Manual



### U.S.A. Headquarters:

### Servicing North America:

Omega Engineering, Inc.  
Toll-Free: 1-800-826-6342 (USA & Canada only)  
Customer Service: 1-800-622-2378 (USA & Canada only)  
Engineering Service: 1-800-872-9436 (USA & Canada only)  
Tel: (203) 359-1660 Fax: (203) 359-7700  
e-mail: [info@omega.com](mailto:info@omega.com)

**For Other Locations Visit [omega.com/worldwide](http://omega.com/worldwide)**

The information contained in this document is believed to be correct, but OMEGA accepts no liability for any errors it contains and reserves the right to alter specifications without notice.

OMEGA's policy is to make running changes, not model changes, whenever an improvement is possible. This affords our customers the latest in technology and engineering. OMEGA is a registered trademark of OMEGA ENGINEERING, INC. © Copyright 2017 OMEGA ENGINEERING, INC. All rights reserved. This document may not be copied, photocopied, reproduced, translated, or reduced to any electronic medium or machine-readable form, in whole or in part, without the prior written consent of OMEGA ENGINEERING, INC.

**M5668-0720**

## Table of Contents

<b>1</b>	<b>Introduction .....</b>	<b>3</b>
<b>2</b>	<b>Installation .....</b>	<b>3</b>
<b>3</b>	<b>Using the OMEGA Enterprise Gateway Tool .....</b>	<b>3</b>
3.1	Launching the OEG Data Tool .....	3
3.2	Backup Data .....	4
3.3	Restore Data .....	4
3.4	Cleaning Data .....	5
3.5	Export Data .....	7

# 1 Introduction

**Note:** This tool is provided as is. OMEGA Engineering Inc. is not responsible for data lost due to user error. The data tool requires OEG license Pro Edition or higher.

OMEGA Enterprise Gateway (OEG) Data Tool provides functions that allow OEG users to backup, restore, clean, and export OEG data. The OEG Data Tool can be utilized to accomplish the following tasks:

- **Backup Data** – The *Backup Data* function provides an efficient way to back up critical OEG user data collections. This feature is a critical step when migrating OEG from one computer to another computer.
- **Restore Data** – The *Restore Data* function allows users to restore all previously backed up OEG data collections. When coupled with the *Backup Data* function, users can **Migrate OEG from One Computer to Another Computer**.
- **Clean Data** – The *Clean Data* function provides users with a tool to clean abnormal data by removing collections that have 0 data points due to misconfiguration. Some devices may occasionally read abnormal data due to environmental electromagnetic interference or other factors.
- **Export Data** – The *Export Data* function exports each sensor channel into a single .csv file. Users can utilize the OEG Data Tool to combine all selected measurements into a single .csv file.

## 2 Installation


The OMEGA Enterprise Gateway data tool comes with the OEG 2.1 installation package.

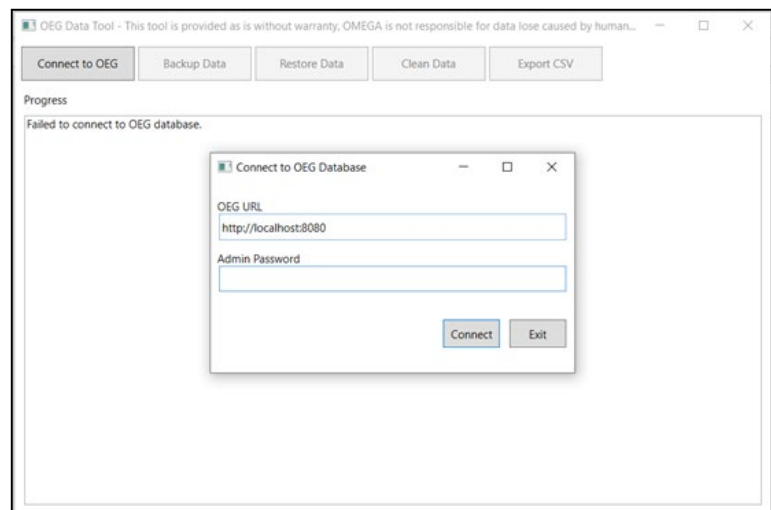
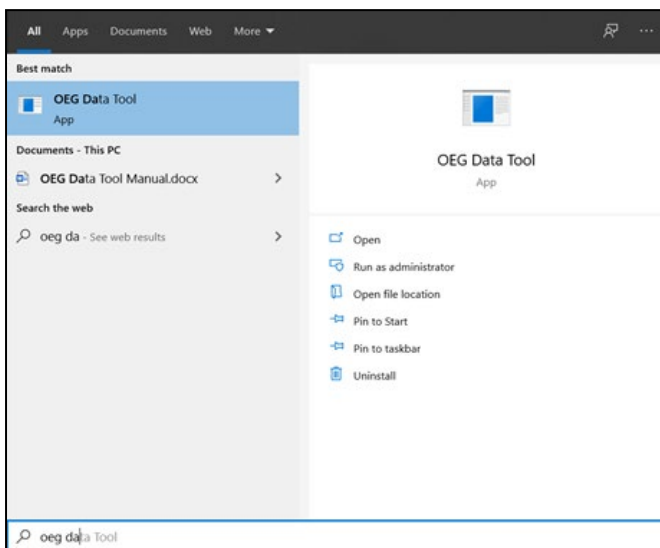
## 3 Using the OMEGA Enterprise Gateway Tool

Follow these instructions for an in-depth guide on how to use the features provided by the OMEGA Enterprise Gateway Data Tool.

### 3.1 Launching the OEG Data Tool

In the Windows OS search bar, type in **OEG Data Tool** to find the OEG Data Tool app and open the application.

 **Important:** When connecting to the OEG Database, you must enter the **OEG URL** and the **Admin Password**. The OEG URL is dependent on the URL used to access the user's OEG web UI. The Admin Password is same as the OEG admin password.



Upon successful login, all function buttons are enabled. To begin the *Backup Data* process, follow these instructions:

**Step 2:** Select a backup folder and specify time range, click the Ok button to start the backup process.



To restore data from previously backed up data, click on the *Restore Data* button. Clicking Restore Data will open the file folder and allow you to select one or more backup files. Click Open to start the restoration process. Progress will be displayed in the Data Tool textbox. To ensure successful restoration, give the Data Tool time to complete the process.



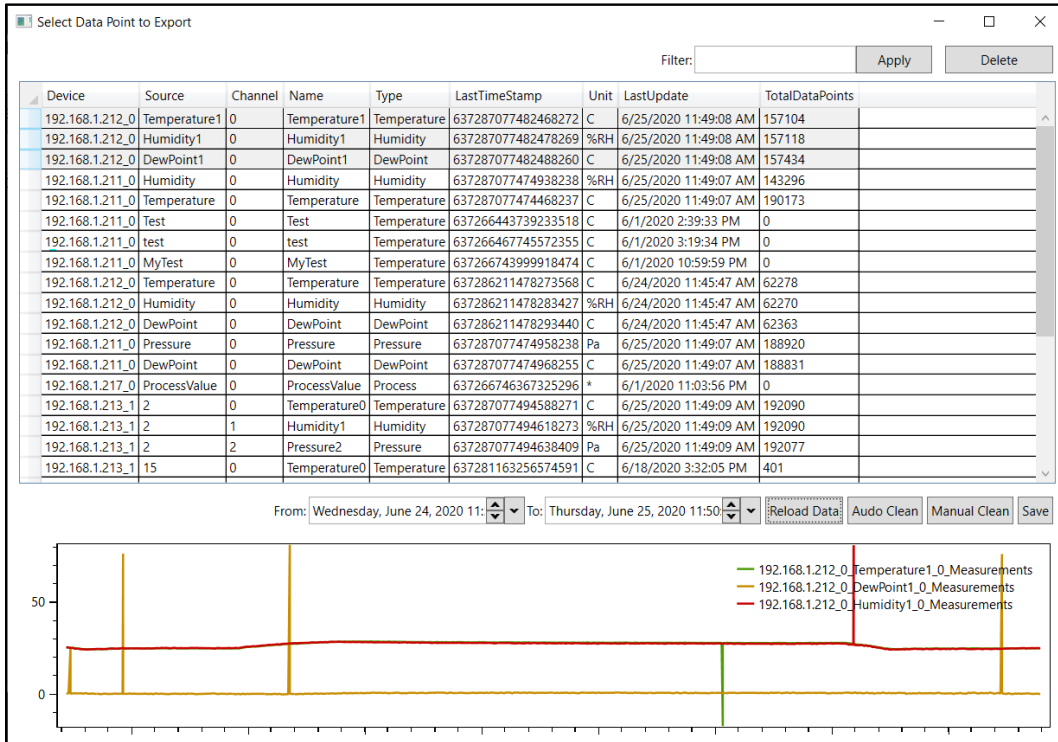
### 3.4 Cleaning Data



**CAUTION:** Once data has been cleaned or deleted, it cannot be recovered.

OEG can capture abnormal readings from devices due to environmental electromagnetic interference and/or other unknown factors. Users can utilize the Cleaning Data function to remove abnormal readings. To drop data points, simply click the data points to highlight them and click the Delete button.

The data cleaning dialog will display all available data points. Users can apply filters to quickly identify points of interest.

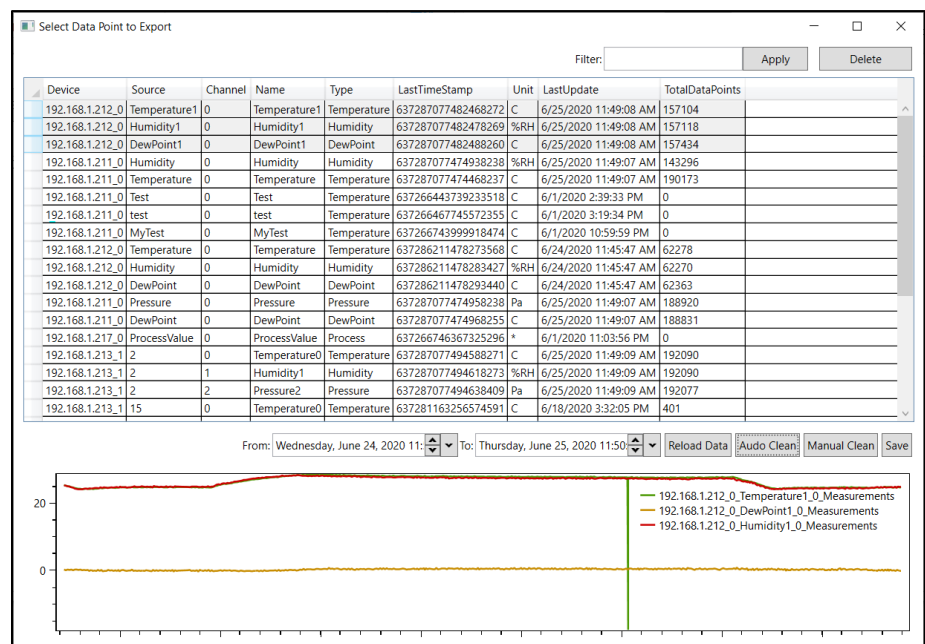


To start the cleaning process, follow the instructions below:

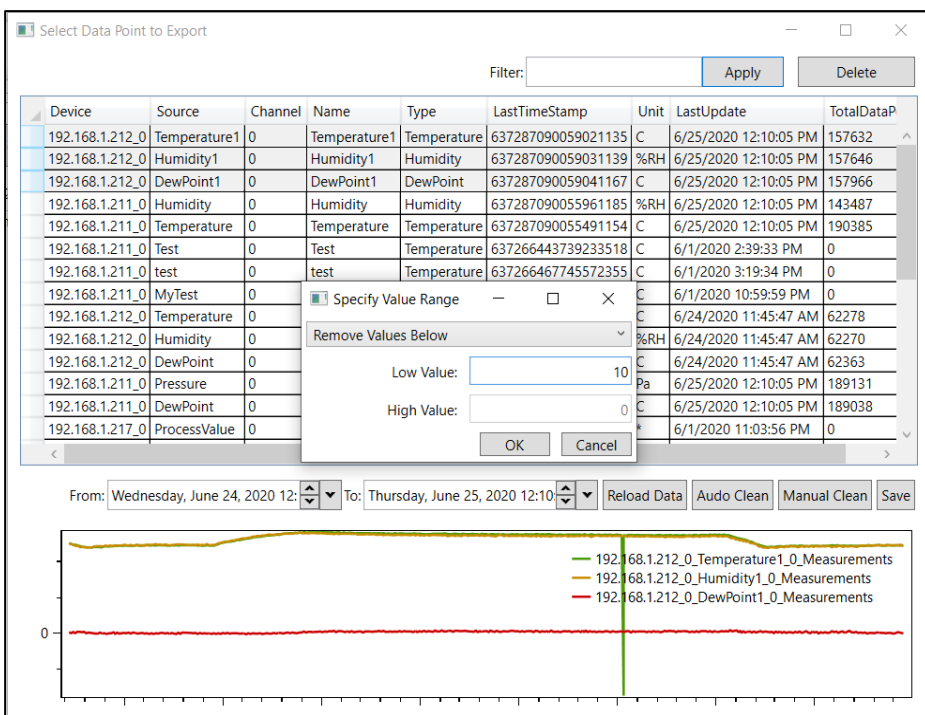
**Step 1:** Click on the Clean Data button to bring up the data cleaning dialog box and select data points and a date range to load the data in the chart.

Select Data Point to Export									Filter:	Apply	Delete
Device	Source	Channel	Name	Type	LastTimeStamp	Unit	LastUpdate	TotalDataPoints			
192.168.1.212_0	Temperature1	0	Temperature1	Temperature	637287077482468272	C	6/25/2020 11:49:08 AM	157104			
192.168.1.212_0	Humidity1	0	Humidity1	Humidity	637287077482478269	%RH	6/25/2020 11:49:08 AM	157118			
192.168.1.212_0	DewPoint1	0	DewPoint1	DewPoint	637287077482488260	C	6/25/2020 11:49:08 AM	157434			
192.168.1.211_0	Humidity	0	Humidity	Humidity	637287077474938238	%RH	6/25/2020 11:49:07 AM	143296			
192.168.1.211_0	Temperature	0	Temperature	Temperature	637287077474468237	C	6/25/2020 11:49:07 AM	190173			
192.168.1.211_0	Test	0	Test	Temperature	637266443739233518	C	6/1/2020 2:39:33 PM	0			
192.168.1.211_0	test	0	test	Temperature	637266467745572355	C	6/1/2020 3:19:34 PM	0			
192.168.1.211_0	MyTest	0	MyTest	Temperature	637266743999918474	C	6/1/2020 10:59:59 PM	0			
192.168.1.212_0	Temperature	0	Temperature	Temperature	637286211478273568	C	6/24/2020 11:45:47 AM	62278			
192.168.1.212_0	Humidity	0	Humidity	Humidity	637286211478283427	%RH	6/24/2020 11:45:47 AM	62270			
192.168.1.212_0	DewPoint	0	DewPoint	DewPoint	637286211478293440	C	6/24/2020 11:45:47 AM	62363			
192.168.1.211_0	Pressure	0	Pressure	Pressure	637287077474958238	Pa	6/25/2020 11:49:07 AM	188920			
192.168.1.211_0	DewPoint	0	DewPoint	DewPoint	637287077474968255	C	6/25/2020 11:49:07 AM	188831			
192.168.1.217_0	ProcessValue	0	ProcessValue	Process	637266746367325296	*	6/1/2020 11:03:56 PM	0			
192.168.1.213_1	2	0	Temperature0	Temperature	637287077494588271	C	6/25/2020 11:49:09 AM	192090			
192.168.1.213_1	2	1	Humidity1	Humidity	637287077494618273	%RH	6/25/2020 11:49:09 AM	192090			
192.168.1.213_1	2	2	Pressure2	Pressure	637287077494638409	Pa	6/25/2020 11:49:09 AM	192077			
192.168.1.213_1	15	0	Temperature0	Temperature	637281163256574591	C	6/18/2020 3:32:05 PM	401			

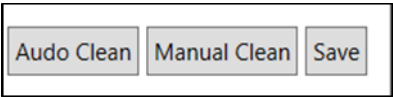
There are two ways that users can complete the data cleaning process. The auto clean function will try to detect abnormal data using running standard deviation check.



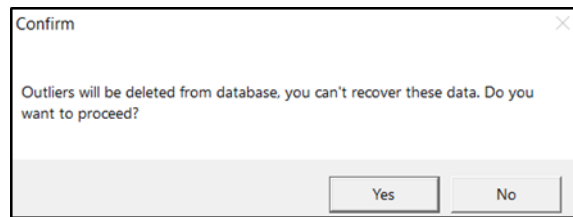
The manual clean function allows users to specify outlier value ranges to remove the outliers.



**Step 2:** Choose Auto Clean or Manual Clean depending on your preference.



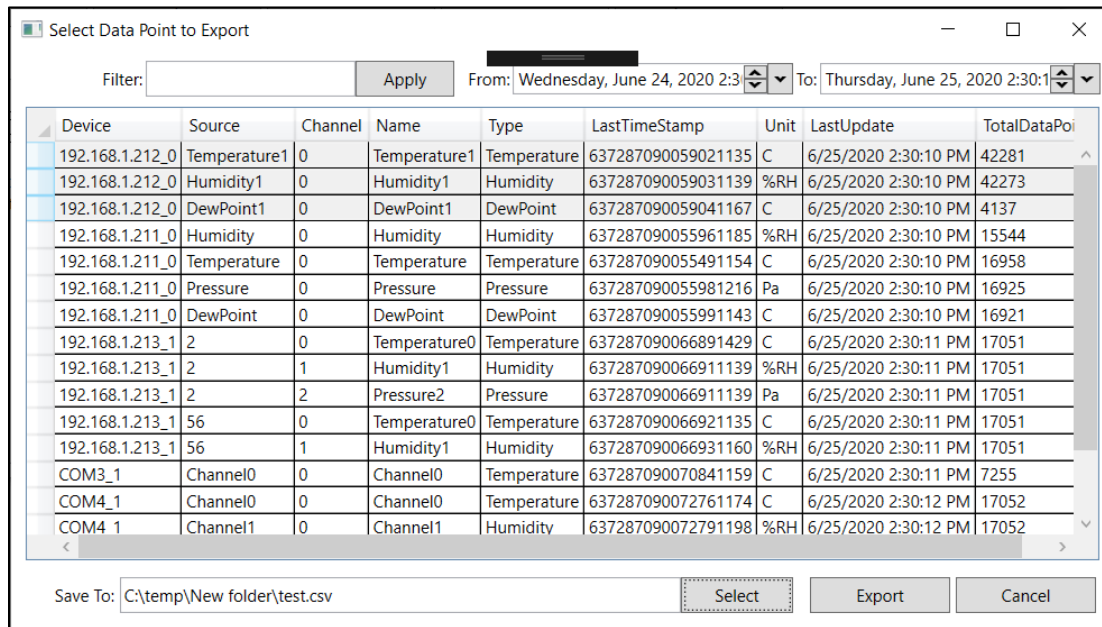
**Step 3:** After the data cleaning process is complete, click the Save button to save the cleaned data.



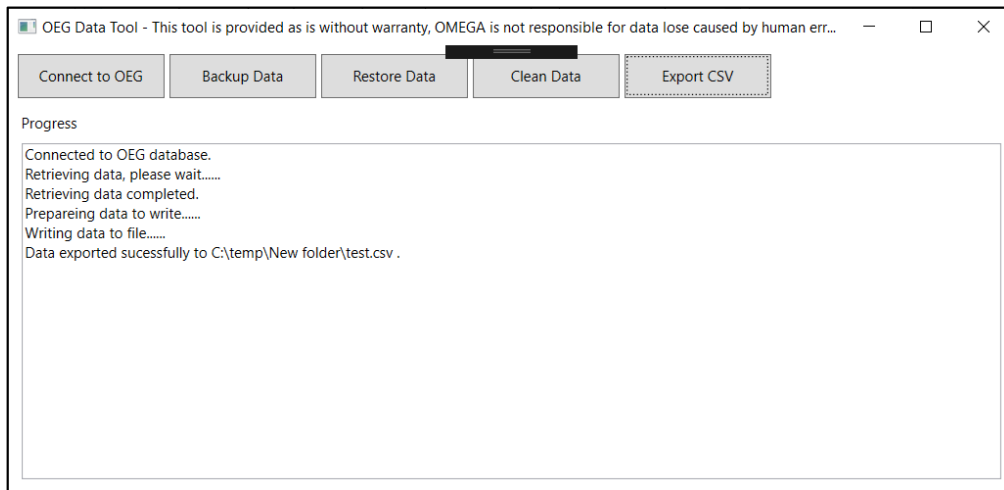
### 3.5 Export Data

The Export Data function allows users to combine multiple data points into a single .csv file. To utilize the Export Data function, follow these instructions:

**Step 1:** Select the desired data, time range and file to export.



**Step 2:** Click the *Export* button to export the data.



This process will take time depends on how many data to be exported. The exportation progress is displayed in the Data Tool textbox.