

Sanitary Thermistor Probes

Heavy-Duty, With M12 Connector

THS-H-M12 Series

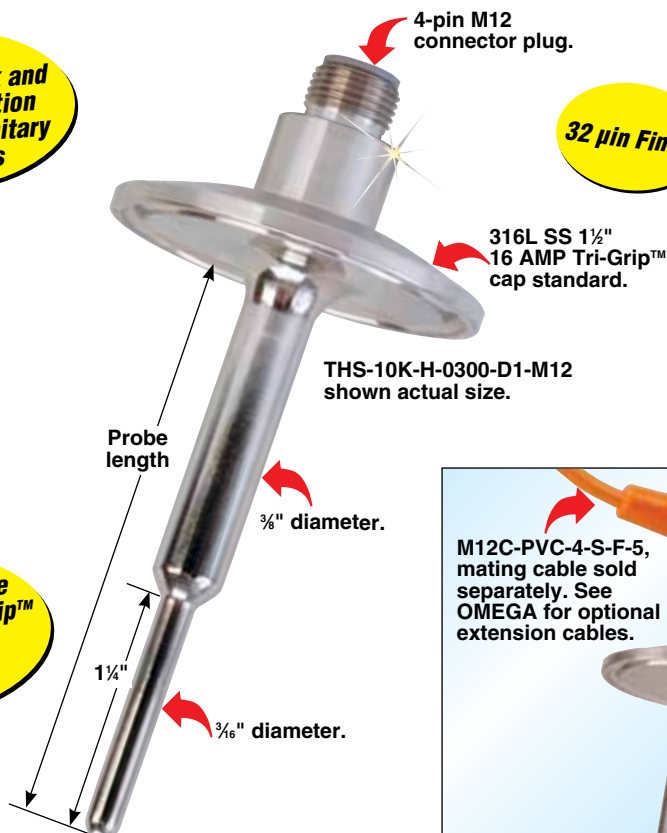


Provides Quick and Easy Installation in CIP and Sanitary Processes

32 μ m Finish

- ✓ Heavy-Duty Probe Design with Stepped Probe Stem for Additional Strength
- ✓ 1½" 16 AMP Tri-Grip™ (Tri-Clamp® Compatible) Fitting Standard
- ✓ 4-Pin M12 Male Connector Standard
- ✓ 316L SS Wetted Surfaces with 32 μ m or Better Finish
- ✓ 10k Thermistor Element (44006) Standard
- ✓ -80 to 150°C (-112 to 302°F) Temperature Range

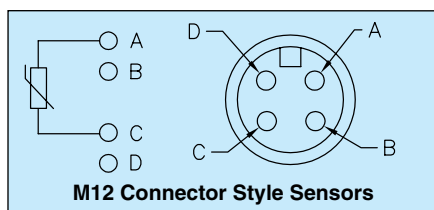
Sensor Flange Size Range ¾ to 4" Tri-Grip™ Process Flange. See OMEGA for Details



M12C-PVC-4-S-F-5, mating cable sold separately. See OMEGA for optional extension cables.

Options

- ✓ Fitting Styles
- ✓ Probe Lengths
- ✓ Thermistor Elements



The OMEGA® THS-H-M12 Series thermistor probe assemblies are available in standard lengths from 3 to 6", with standard 10 k Ω (44006) thermistor element. These heavy-duty probes have a 3/8" diameter, which steps down to a 1/8" diameter at the probe tip, for fast response and additional strength. Standard features include a 1½" 16 AMP Tri-Grip™ fitting and a 4-pin M12 male connector termination. Please consult sales for available options, including element types and curves, probe lengths, protection heads and sanitary fitting styles.

Element Options

Sensor Code	Resistance @ 25°C	Element Series
2K	2252 Ω	44004
3K	3000 Ω	44005
5K	5000 Ω	44007
30K	30,000 Ω	44008

For other thermistor elements, change the model number from "10K" to the desired sensor code as shown in the table above, no additional cost.

To Order

Model Number	Resistance at 25°C	Element Series	Interchangeability (0 to 70°C)	Sheath Diameter	Probe Length
THS-10K-H-0300-D1-M12	10,000 Ω	44006	$\pm 0.2^\circ\text{C}$	1/4"	3"
THS-10K-H-0400-D1-M12	10,000 Ω	44006	$\pm 0.2^\circ\text{C}$	1/4"	4"
THS-10K-H-0500-D1-M12	10,000 Ω	44006	$\pm 0.2^\circ\text{C}$	1/4"	5"
THS-10K-H-0600-D1-M12	10,000 Ω	44006	$\pm 0.2^\circ\text{C}$	1/4"	6"

See OMEGA for M12C series cables with M12 connectors.

For probe lengths longer than 6", change "0600" in model number to the required length (eg, 12" = 1200, 9¼" = 0925) for an additional cost.

Ordering Example: THS-10K-H-0400-D1-M12, 10,000 Ω thermistor sensor, 1½" 16 AMP Tri-Grip™ fitting, 4" length, heavy-duty probe, M12 style male connector.

Sanitary Thermistor Probes

Standard Duty with M12 Connector

THS-S-M12 Series



Provides Quick and Easy Installation in CIP and Sanitary Processes

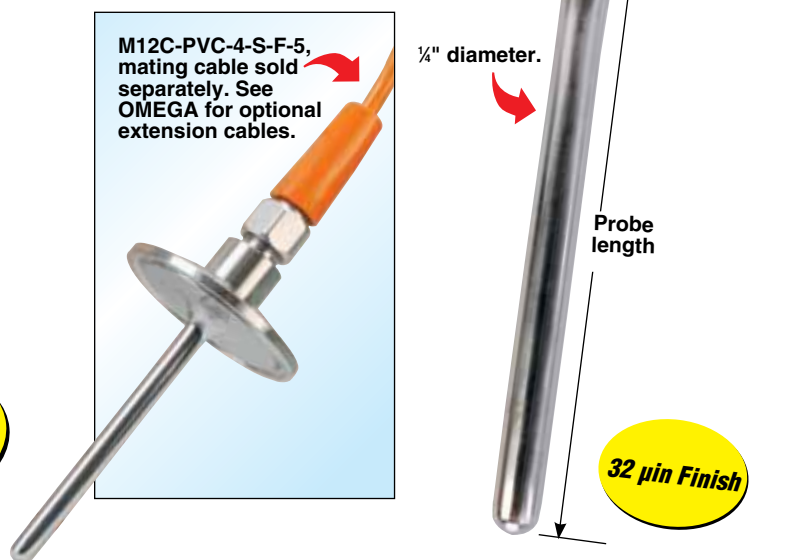
- ✓ Standard Duty 1/4" Probe Diameter
- ✓ 1 1/2" 16 AMP Tri-Grip™ (Tri-Clamp® Compatible) Fitting Standard
- ✓ 4-Pin M12 Male Connector Standard
- ✓ 316L SS Wetted Surfaces with 32 µin or Better Finish
- ✓ 10k Thermistor Element (44006) Standard
- ✓ -80 to 150°C (-112 to 302°F) Temperature Range

Options

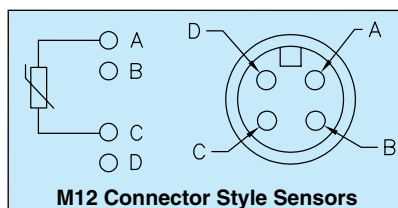
- ✓ Fitting Styles
- ✓ Probe Lengths
- ✓ Thermistor Elements

Sensor Flange Size Range 3/4" to 4" Tri-Grip™ Process Flange. See OMEGA for Details

THS-10K-S-0300-D1-M12 shown actual size.



The OMEGA® THS-S-M12 Series thermistor probe assemblies are available in standard lengths from 3 to 6", with standard 10 kΩ (44006) thermistor element. Standard features include a 1 1/2" 16 AMP Tri-Grip™ fitting and a 4-pin M12 male connector termination. Please consult sales for available options, including element types and curves, probe lengths, protection heads and sanitary fitting styles.



Element Options

Sensor Code	Resistance @ 25°C	Element Series
2K	2252 Ω	44004
3K	3000 Ω	44005
5K	5000 Ω	44007
30K	30,000 Ω	44008

For other thermistor elements, change the model number from "10K" to the desired sensor code as shown in the table above, no additional cost.

To Order

Model Number	Resistance at 25°C	Element Series	Interchangeability (0 to 70°C)	Sheath Diameter	Probe Length
THS-10K-S-0300-D1-M12	10,000 Ω	44006	±0.2°C	1/4"	3"
THS-10K-S-0400-D1-M12	10,000 Ω	44006	±0.2°C	1/4"	4"
THS-10K-S-0500-D1-M12	10,000 Ω	44006	±0.2°C	1/4"	5"
THS-10K-S-0600-D1-M12	10,000 Ω	44006	±0.2°C	1/4"	6"

See OMEGA for M12C series cables with M12 connectors.

For probe lengths longer than 6", change "0600" in model number to the required length (eg, 12" = 1200, 9 1/4" = 0925) for an additional cost.

Ordering Example: THS-10K-S-0400-D1-M12, 10,000 Ω thermistor sensor, 1 1/2" 16 AMP Tri-Grip™ fitting, 4" length, standard duty probe, M12 style male connector.