

FOOD EQUIPMENT HEATERS WITH LOW LIQUID CUTOUT

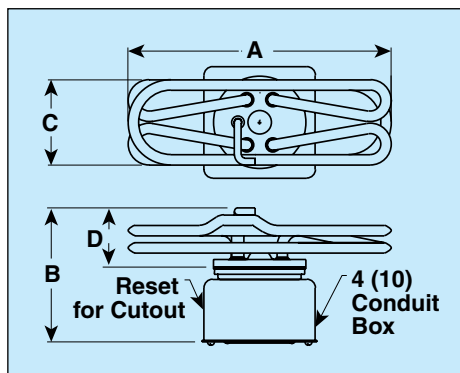
TTUH-CO Series



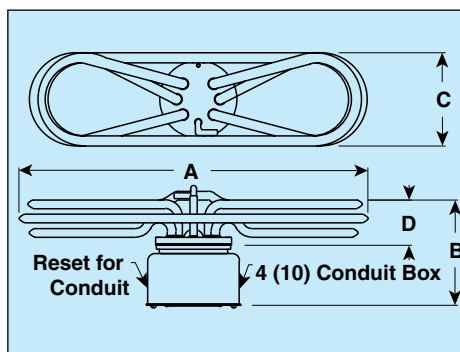
- ✓ Brass Flange
- ✓ Copper Sheath
- ✓ High Watt Density
- ✓ Without Contactor
- ✓ Integral Low Liquid Thermal Cutout

FEATURES

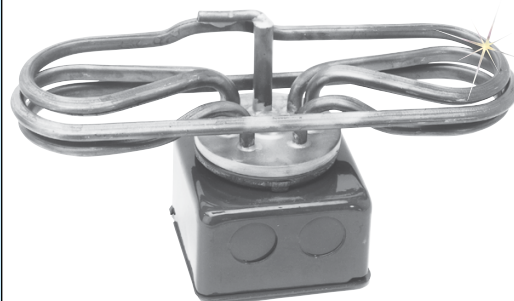
The TTUH-CO series heater is mounted through a 6 cm (2 $\frac{7}{16}$ ") diameter opening in bottom of vessel. Heater is inserted with gasket through top of vessel or through hand hole. Mount combination terminal box and clamp over the element flange and use bolt to draw mounting clamp tightly to the tank.



Dimensions: inch (cm)



TTUH-CO-15/208V shown smaller than actual size.



TTUH-CO-303/240/3P shown smaller than actual size.

To Order

kW	W/in ²	Dimensions: inch (cm)				Model No.	Wt. lb (kg)
		A	B	C	D		
TTUH-CO Series — Single Phase W/cutout — 2 ½" Minimum Liquid Depth							
1.5	62	7 ⁷ / ₁₆ (19)	4 ¹³ / ₁₆ (12)	3 ¹ / ₁₆ (8)	2 ³ / ₈ (6)	TTUH-CO-15/*	3 (1)
2	60	9 ⁷ / ₁₆ (23)	4 ¹³ / ₁₆ (12)	3 ¹ / ₁₆ (8)	2 ¹ / ₈ (5)	TTUH-CO-20/*	3 (1)
2.5	40	6 ³ / ₄ (17)	4 ¹³ / ₁₆ (12)	3 ¹ / ₁₆ (8)	2 ¹ / ₈ (5)	TTUH-CO-25/*	3 ¹ / ₈ (1)
3	55	6 ³ / ₄ (17)	4 ¹³ / ₁₆ (12)	3 ¹ / ₁₆ (8)	2 ¹ / ₈ (5)	TTUH-CO-30/*	3 ¹ / ₄ (1)
4	64	9 ¹ / ₂ (24)	4 ¹³ / ₁₆ (12)	3 ¹ / ₁₆ (8)	2 ¹ / ₈ (5)	TTUH-CO-40/*	3 ⁷ / ₈ (2)
5	70	12 ³ / ₄ (32)	5 ³ / ₈ (14)	4 (10)	2 ¹¹ / ₁₆ (7)	TTUH-CO-50/*	5 (2)
6	73	14 ¹ / ₂ (37)	5 ³ / ₈ (14)	4 (10)	2 ¹¹ / ₁₆ (7)	TTUH-CO-60/*	6 (3)
7	85	14 ¹ / ₂ (37)	5 ³ / ₈ (14)	4 (10)	2 ¹¹ / ₁₆ (7)	TTUH-CO-70/240	6 (3)
TTUH-CO Series — Three Phase with Cutout — 3" Minimum Liquid Depth							
3	55	8 ³ / ₄ (22)	5 ¹ / ₁₆ (15)	3 ¹ / ₈ (8)	2 ³ / ₄ (7)	TTUH-CO-303/*/3P	4 (2)
4	74	8 ³ / ₄ (22)	5 ¹³ / ₁₆ (15)	3 ¹ / ₈ (8)	2 ³ / ₄ (7)	TTUH-CO-403/*/3P	5 (2)
5	73	11 (28)	5 ¹³ / ₁₆ (15)	3 ¹ / ₈ (8)	2 ³ / ₄ (7)	TTUH-CO-503/**/3P	5 (2)
6	72	11 ¹ / ₁₆ (28)	5 ³ / ₄ (16)	4 ¹ / ₁₆ (10)	3 (8)	TTUH-CO-603/*/3P	5 (2)
7	78	11 ¹ / ₁₆ (28)	5 ³ / ₄ (16)	4 ¹ / ₁₆ (10)	3 (8)	TTUH-CO-703/208/3P	4 ¹ / ₂ (2)
8	69	14 ¹ / ₂ (37)	5 ³ / ₄ (16)	4 ¹ / ₁₆ (10)	3 (8)	TTUH-CO-803/208/3P	6 (3)
9	78	14 ¹ / ₂ (37)	5 ³ / ₄ (16)	4 ¹ / ₁₆ (10)	3 (8)	TTUH-CO-903/208/3P	6 (3)

* Designate voltage, i.e. insert "208" for 208V or "240" for 240V.

/** Designate voltage, i.e., "208" for 208V or "240" for 240V, or "480" for 480V.

Note: Other kW rating and voltages are available. Contact OMEGALUX®.

Ordering Examples: TTUH-CO-15/208, 1.5 kW heater powered by 208 Vac.

TTUH-CO-303/240/3P, 3 kW heater powered by 240 Vac 3 phase.

When mounting in a closed tank, a hand hole should be cut in the side of the tank only large enough to insert the heater and reach to the bottom of the tank to insert in the 6 cm (2 $\frac{7}{16}$ ") diameter mounting hole. See To Order table for heater dimensions.

SPECIFICATIONS

Wattage: 1.5 to 9 kW

Power: 208 and 240 or 480V, 1 and 3 Phase

Watt Density: 40 to 85 W/in²

Note: All models have an integral low-liquid cutout to protect the heater.

CAUTION AND WARNING!

Fire and electrical shock may result if products are used improperly or installed or used by non-qualified personnel. See inside back cover for additional warning.

FOOD EQUIPMENT HEATERS

TTUH Series

- ✓ High Watt Density
- ✓ Brass Flange
- ✓ Copper Sheath
- ✓ Without Integral Low Liquid Cutout
- ✓ Most Models UL Listed

FEATURES

The TTUH-CO heater is mounted through a 2 7/16" dia. opening in bottom of vessel. Heater is inserted with gasket through top of vessel or through hand hole. Mount combination terminal box and clamp over the element flange and use bolt to draw mounting clamp tightly to tank.

When mounting in a closed tank, a hand hole should be cut in the side of the tank only large enough to insert the heater and reach to the bottom of the tank to insert in the 2 7/16" dia. mounting hole. See How to Order Table for heater dimensions.

APPLICATIONS

For coffee urns, steam tables, kettles, humidifiers and other commercial uses.

SPECIFICATIONS

Wattage: 1 to 12 kW

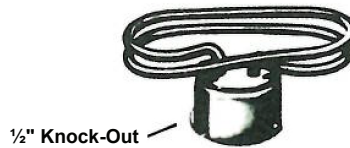
Power: 120, 208, 240 and 480 V, one and three phase

Watt Density: 42 to 98 W/in²

Note: These models do not have a built-in low liquid cutout.

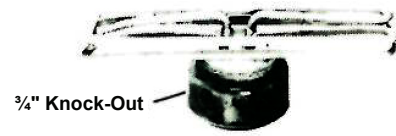
CAUTION AND WARNING!

Fire and electrical shock may result if products are used improperly or installed or used by non-qualified personnel. See inside back cover for additional warnings.



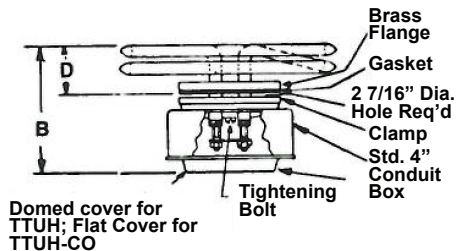
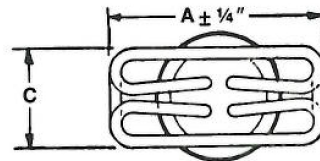
1/2" Knock-Out

TTUH Series — 1 through 4 kW
Single Phase Shown



3/4" Knock-Out

TTUH Series — 5 through 7 kW
Single Phase Shown



Ordering Example: TTUH-15A/120 is a 1.5 kW heater powered by 120 VAC.

Ordering Example: TTUH-503/240/3P is a 5 kW heater powered by 3 phase 240 VAC.

To Order (Specify Model Number)

kW	W/in ²	Dimensions: inch (cm)				Catalog No.	Wt. lbs.
		A	B	C	D†		
TTUH Series — 1 ph, 2½" Minimum Liquid Depth							
1	42	6¾	4⅞ ₁₆	4¼	2⅝ ₁₆	†TTUH-10A/120	2¾
1.5	57	6¾	4⅞ ₁₆	4¼	2⅝ ₁₆	†TTUH-15A/*	2¾
2	57	6¾	4⅞ ₁₆	4¼	2⅝ ₁₆	†TTUH-20A/*	2¾
2.5	58	6¾	4⅞ ₁₆	4¼	2⅝ ₁₆	†TTUH-25A/*	2⅞ ₈
3	55	6¾	4⅞ ₁₆	4¼	2⅝ ₁₆	†TTUH-30A/*	3
4	53	9½	4⅞ ₁₆	4	1⅜ ₈	†TTUH-40A/*	3⅜ ₈
5	39	12¾	4⅞ ₁₆	4	1⅞ ₁₆	†TTUH-50/**	4½
6	42	14½	4⅞ ₁₆	4	1⅞ ₁₆	†TTUH-60/**	5½
7	49	14½	4⅞ ₁₆	4	1⅞ ₁₆	†TTUHs70/**	5½
TTUH Series — 3 ph, 3" Minimum Liquid Depth							
3	55	8¾	4⅝ ₈	3⅞ ₈	1⅞ ₁₆	TTUH-303/208/3P	3½
3	55	8¾	4⅝ ₈	3⅞ ₈	1⅞ ₁₆	†TTU H-303/240/3P	3½
4	74	8¾	4⅝ ₈	3⅞ ₈	1⅞ ₁₆	†TTUH-403/208/3P	3½
4	74	8¾	4⅝ ₈	3⅞ ₈	1⅞ ₁₆	†TTU H-403/240/3P	3½
4	74	8¾	4⅝ ₈	3⅞ ₈	1⅞ ₁₆	TTUH-403/480/3P	3½
5	73	11	4⅝ ₈	3⅞ ₈	1⅞ ₁₆	†TTUH-503/**/3P	4½
6	67	11⅞ ₁₆	5	4⅞ ₁₆	2⅜ ₈	†TTUH-603/240/3P	4½
6	67	11⅞ ₁₆	5	4⅞ ₁₆	2⅜ ₈	TTUH-603/480/3P	4½
7	78	11⅞ ₁₆	5	4⅞ ₁₆	2⅜ ₈	†TTUH-703/**/3P	4½
8	69	11⅞ ₈	5	4⅞ ₁₆	2⅜ ₈	TTUH-803/**/3P	4½
12	98	17¾	5	4⅞ ₁₆	2⅜ ₈	TTU H-1203/240/3P	5½

† UL listed.

‡ Minimum liquid level should be maintained at 1/2" above D dimension.

/*Designate voltage, i.e., insert 120 for 120V, 240 for 240 V or 480 for 480 V

/**Designate voltage, i.e., insert 208 for 208 Var 240 for 240 V