

**USER'S MANUAL**

# UWRH, UWRH-2-NEMA

## Wireless Humidity/Temperature Transmitter



UWRH-2



UWRH-2-NEMA



[dwyeromega.com](http://dwyeromega.com) | [info@dwyeromega.com](mailto:info@dwyeromega.com)

For latest product manuals:  
[dwyeromega.com/en-us/pdf-manuals](http://dwyeromega.com/en-us/pdf-manuals)

M4432-RH/1025



## **Table of Contents**

Section	Page
<b>Section 1 Introduction .....</b>	<b>1-1</b>
1.1 Precautions .....	1-1
1.2 Statement on FCC .....	1-2
1.3 General Description and System Components .....	1-2
<b>Section 2 Hardware .....</b>	<b>2-1</b>
2.1 Unpacking and Inspection .....	2-1
2.2 Included Items .....	2-1
<b>Section 3 Operation .....</b>	<b>3-1</b>
3.1 Main Transmitter Board .....	3-1
<b>Section 4 Software .....</b>	<b>4-1</b>
4.1 Getting Started .....	4-1
4.2 Software Installation .....	4-1
<b>Section 5 End Device Operation .....</b>	<b>5-1</b>
5.1 Setup and Configuration .....	5-1
5.2 Mounting Installation .....	5-7
5.3 Battery Replacement .....	5-9
<b>Section 6 System Operation .....</b>	<b>6-1</b>
6.1 Introduction .....	6-1
6.2 RF Communication Basics .....	6-1
6.3 Basic System Overview .....	6-1
6.4 Environment/Operating Conditions .....	6-2
6.5 Transmit Rate vs. Battery Life .....	6-3
<b>Section 7 Service and Calibration .....</b>	<b>7-1</b>
7.1 Service and Calibration .....	7-1
<b>Section 8 Specifications .....</b>	<b>8-1</b>
<b>Section 9 Approvals, Regulatory Compliance .....</b>	<b>9-1</b>



# UWRH-2/UWRH-2-NEMA Wireless Humidity/Temperature Transmitter

---

## List of Figures

Section	Figure	Description .....	Page
Section 3.1	1A	Main Transmitter Operation, UWRH-2 .....	3-1
Section 3.1	1B	Main Transmitter Board, UWRH-2-NEMA .....	3-1
Section 4.2.2	2	Software - Welcome Screen.....	4-1
Section 4.2.2	3	Software - Select Installation Screen .....	4-2
Section 4.2.2	4	Software - Confirm Installation Screen.....	4-2
Section 4.2.2	5	Software – License Agreement Screen.....	4-3
Section 4.2.2	6	Software – Installation Complete Screen .....	4-3
Section 5.1	7	USB Cable .....	5-1
Section 5.1.4	8	Main Transmitter Board .....	5-3
Section 5.1.4	9	Launch Setup Utility Screen.....	5-3
Section 5.1.4	10	Utility Program - Welcome Screen.....	5-4
Section 5.1.4	11	Utility Program – Connect To Transmitter Screen .....	5-4
Section 5.1.4	12	Utility Program – Setup Transmitter Screen.....	5-5
Section 5.1.4	13	Utility Program – Establish Link Screen .....	5-5
Section 5.1.4	14	Utility Program – Choose Options Screen .....	5-6
Section 5.1.4	15	Utility Program – Send Setting To Transmitter Screen .....	5-6
Section 5.2.1	16A	Mounting, UWRH-2 .....	5-7
Section 5.2.1	16B	Mounting, UWRH-2-NEMA .....	5-7
Section 5.2.1	17	Fresnel Zone .....	5-8
Section 5.3	18A	Battery Replacement, UWRH-2.....	5-9
Section 5.3	18B	Battery Replacement, UWRH-2.....	5-9
Section 6.3	19	End Device/ Receiver .....	6-1

## Section 1 - Introduction

Please read this manual completely before installing and operating your wireless end device and receiver system. It's important read and follow all notes, cautions, warnings and safety precautions before operating this device. "Device" refers to your transmitter or receiver unit.

### 1.1 Precautions

- This device is not designed for use in any medical or nuclear applications.
- Do not operate this device in flammable or explosive environments.
- Never operate with a power source other than the one recommended in this manual. For the UWH-2 only, the device can be externally powered via USB port on a PC or USB charging device.
- This device has been designed for dry, moisture free indoor applications only.
- Do not operate this device outside of the recommended use outlined in this manual.
- No co-location with other radio transmitters is allowed. By definition, co-location is when another radio device or it's antenna is located within 20 cm of your connector / transmitter and can transmit simultaneously with your UWRH unit.
- Never install wireless connector / transmitters within 20 cm or less from each other.
- Never install and / or operate your UWRH connector transmitter closer than 20 cm to nearby persons.
- Never use your UWRH connector / transmitter as a portable device. Your unit has been designed to be operated in a permanent installation only.

#### NOTE:

There are no user serviceable parts inside your device. Attempting to repair or service your unit may void your warranty:

## 1.2 Statement on FCC and CE Marking

### 1.2.1 FCC Marking

Before 2025:

FCC ID: OUR-XBEEPRO IC #4214A-EXBEEPRO

After 2025:

FCC ID: MCQ-S2CTH IC #1846A-S2CTH

This device complies with Part 15 of the FCC rules. Operation is subject to the following two conditions: 1.) This device may not cause harmful interference. 2.)

This device must accept any interference received, including interference that may cause undesired operation.

UWRH-2 is CE compliant.

UWRH-2-NEMA is not CE compliant

## 1.3 General Description & System Components

### 1.3.1 General Description

The UWRH-2 and UWRH-2-NEMA Wireless Relative Humidity transmitters feature a stand-alone, compact, battery powered design that transmits measurements back to a host receiver up to 90 m (300') away. When activated the wireless transmitter will transmit readings continuously at pre set time interval that was programmed by the user during the initial setup. Each unit measures and transmits: Relative Humidity Reading, Ambient Temperature, RF Signal Strength and Battery Condition to the receiver and is displayed on your PC screen in real time using the provided software.

The UWRH-2-USCA and UWRH-2-NEMA-USCA transmitter models offer the same features as the original versions, with the exception of achieving a higher RF output signal as well as a greater RF signal range.

---

## Section 2 – Hardware

It is important that you read this manual completely and follow all safety precautions before operating this instrument.

### 2.1 Package Inspection

Remove the packing list and verify that you have received all your equipment. If you have any questions about the shipment, please call our Customer Service Department at

**1-800-622-2378 or 203-359-1660.**

We can also be reached on the Internet at **omega.com**

**e-mail: cservice@omega.com**

When you receive the shipment, inspect the container and equipment for any signs of damage. Note any evidence of rough handling in transit. Immediately report any damage to the shipping agent.

---

**NOTE:**

The carrier will not honor any damage claims unless all shipping material is saved for inspection. After examining and removing contents, save packing material and carton in the event reshipment is necessary.

---

### 2.2 Included Items

The following items are supplied in the box.

- 1 UWRH-2 or UWRH-2-NEMA transmitter
- 1 User's Guide
- 3.6V Lithium Battery

## Section 3 - Operation

### 3.1 Main Transmitter Operations

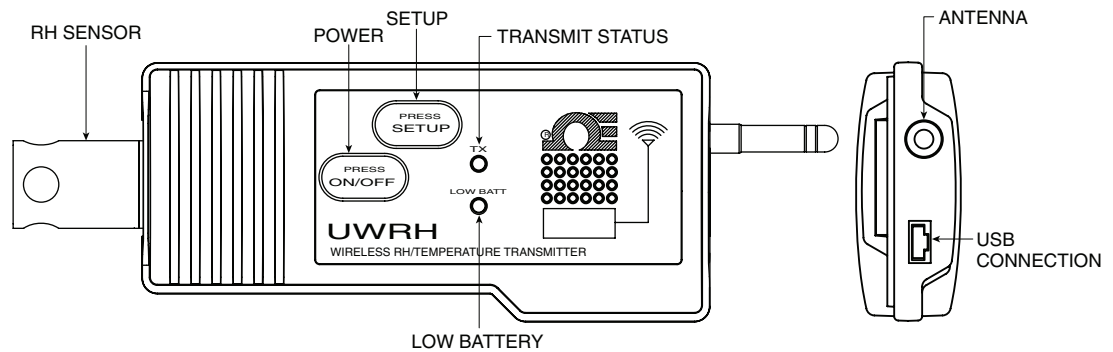


Figure 1A. Main Transmitter Operations, UWRH-2

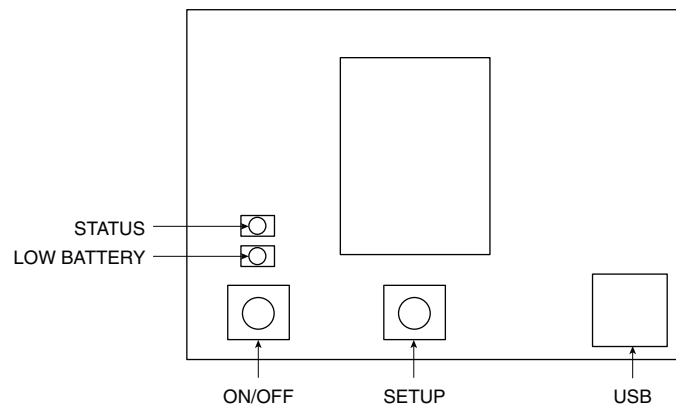


Figure 1B. Main Transmitter Board, UWRH-2-NEMA

## Section 4 – Software

### 4.1 Getting Started

The following program files can be downloaded from the [dwyeromega.com](http://dwyeromega.com) website.

- End Device Setup Utility Software
- Receiver / Transceiver Setup Utility Software
- TC-Central Measurement and Data Logging Software

### 4.2 Software Installation

#### 4.2.1 System Requirements

Your PC should meet the following minimum requirements:

- Pentium Class processor
- Hard Drive Space: 210 meg
- Ram: 256 meg or higher
- 1 Available USB Port
- Windows 2000 through Windows 11 Operating System

#### 4.2.2 Software Installation

Download the software from [dwyeromega.com](http://dwyeromega.com). Unzip the file and run setup.exe.



Figure 2. Software - Welcome Screen



This welcome screen should be visible on your computer screen. To continue with installing the program, click the “Next >” button.

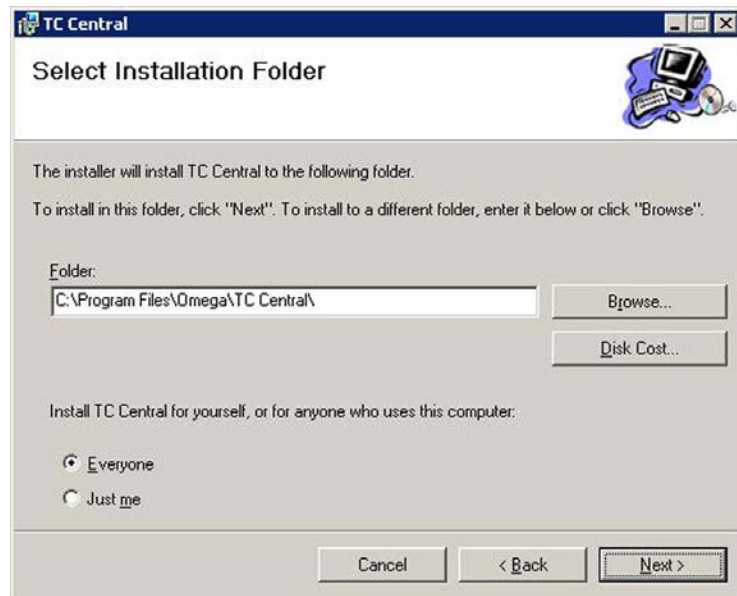


Figure 3. Software - Select Installation Screen

From this screen you select the folder where you want the program files installed on your PC. The default setting will install the software under your “Program” folders in a new folder named “Omega”. To continue with installing the program click the “Next >” button.

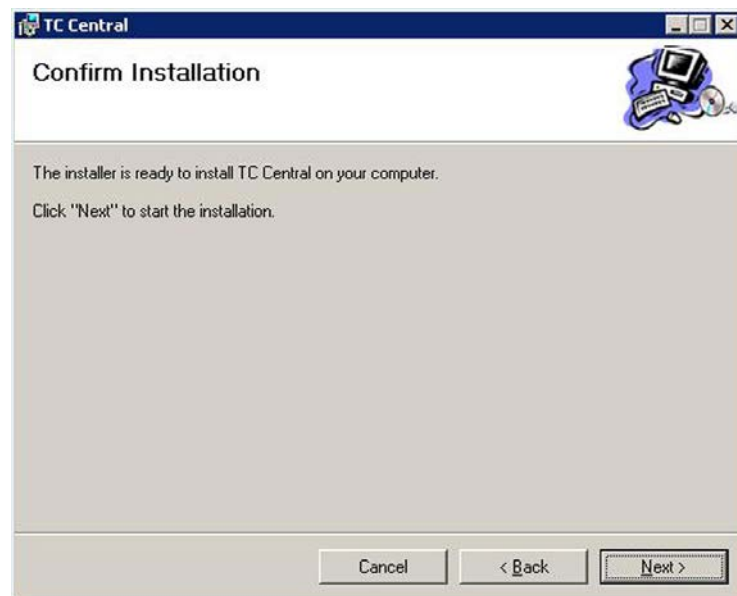


Figure 4. Software - Confirm Installation Screen

The setup wizard now has all the information to complete the installation of the software on your PC. To continue with installing the program click the “Next >” button.



Figure 5. Software - License Agreement Screen

From this screen you must select "Agree" to continue installing your program. After making your selection click the "Next >" button. The setup wizard will now install the software.

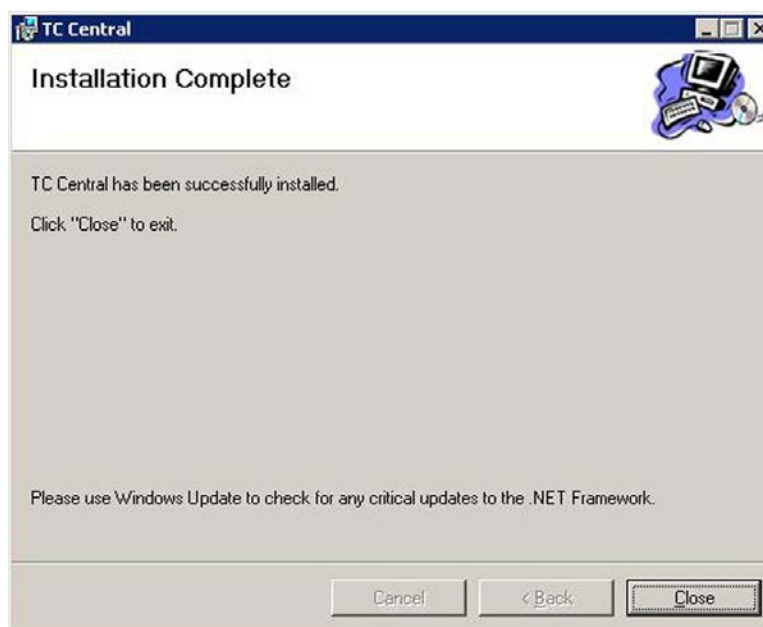


Figure 6. Software - Installation Complete Screen

Congratulations! You have just successfully installed the TC-Central Program on your PC. To end installing the program and close the setup wizard click the "Close" Button.

## Section 5 - End Device Operation

### 5.1 Setup and Configuration

#### 5.1.1 Connecting your device

Connect the USB cable to your connector/transmitter unit and also to an available USB port on your computer. See figure below. This cable was provided in the box with your receiver unit. This same cable is used for programming your End Device and for receiver operation later.



Figure 7. USB Cable

#### 5.1.2 Configure Your End Device

Now that you have connected your USB cable to your PC and transmitter you will complete the following steps to configure your End Device before placing the unit into operation. You will be using the configuration software utility that you installed onto your PC in Section 4. If you have not installed the configuration software utility you should do so now. During this procedure you will be setting the following parameters in your transmitter.

#### 5.1.3 Button Operation

Press and hold "ON/OFF"

Press and release "SETUP"

Release "ON/OFF"

The green indicator (TX) will start blinking once per second

(2.) To exit configuration mode

Press and release "SETUP"

#### 5.1.4 Indicator Lights

##### (1) Transmit (TX) Green Indicator Light

The green indicator light marked "TX" on the front of the connector/transmitter will blink every time the unit sends data to the receiving unit. Example; If you selected a 5 sec sample rate the green TX led will blink one time every 5 seconds.

##### (2) Low Battery (Low Bat) Red Indicator Light

The red indicator light marked "Low Bat" on the front of the connector/transmitter will turn on when the battery reaches a level at or below the power level required for normal operation. When this indicator turns on it's time to install a fresh battery in your unit. For procedures on how to change your battery see Section 5.3.

## Channel Number

This sets a unique address number into your transmitter. Later, when you set up your measurement software you will again set channel numbers to receive readings from the corresponding unit(s). Each unit must be set for a different channel number for your system to operate correctly.

---

**NOTE:**

---

If you will be using more than one receiver unit in your area it is important to set the transmitter address numbers to be a corresponding number in your TC-Central software.

### Example Rate

For the first receiver: Set the channels on your transmitters to 101, 102, 103, 104, etc. Then set the channels in your TC-Central user software to match.

For the second receiver: Set the channels on your transmitters to 201, 202, 203, 204, etc.

Then set the channels in your TC-Central user software to match.

This numbering scheme can be expanded to match the number of receivers you are using.

---

## Sample Rate

This will program your End Device to transmit 1 data reading to your receiver at a specified time interval. Available settings are 2, 3, 5, 15, 30, 45, 60, 75 or 90 seconds

---

**NOTE:**

---

The sample rate you set will have the most direct effect on the life of the battery in your End Device. It is recommended that you set the longest sample time that your application can live with to extend time between battery replacement. See Section 5.3 for more information on battery

---

**STEP 1. Enter the “SETUP” mode.**

To place your transmitter into the “SETUP” mode for programming follow this procedure.

Press and hold the “ON/OFF” button. While the “ON/OFF” button is being held, press the “SETUP” button one time and then release the “ON/OFF” button. The green (TX) indicator on the front of your device should be blinking at a steady rate. This indicates your End Device is ready to run the configuration utility software.

**NOTE:**

See Figures 1A and 1B for diagrams (Page 3-1).

**STEP 2. Launch Setup Utility Program.**

To launch the End Device setup utility program on your PC begin by accessing the “Programs” list under your “Start Menu”.

Scroll through the list of to find the Omega “TC-Central” folder, then select the End Device Configuration Program.

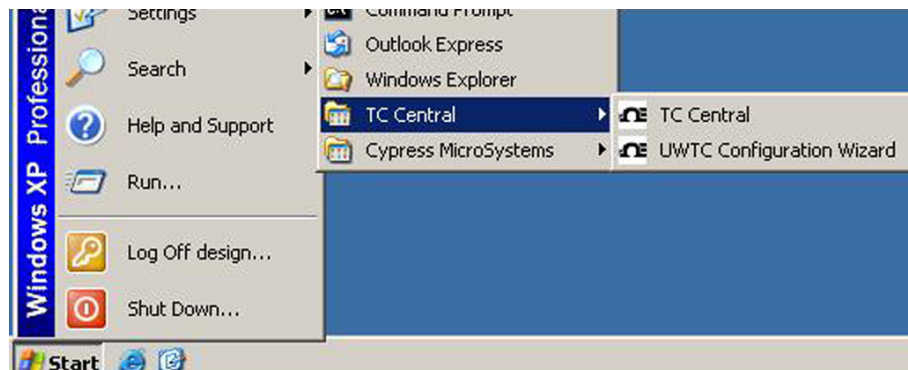


Figure 9. Launch Setup Utility Screen

### STEP 3. Programming your settings into your End Device



Figure 10. Utility Program - Welcome Screen

After starting the setup utility program this will be the first screen you will see. Click the "Next >" button to proceed and continue setting up your End Device. Each screen will provide instruction details on how to proceed.

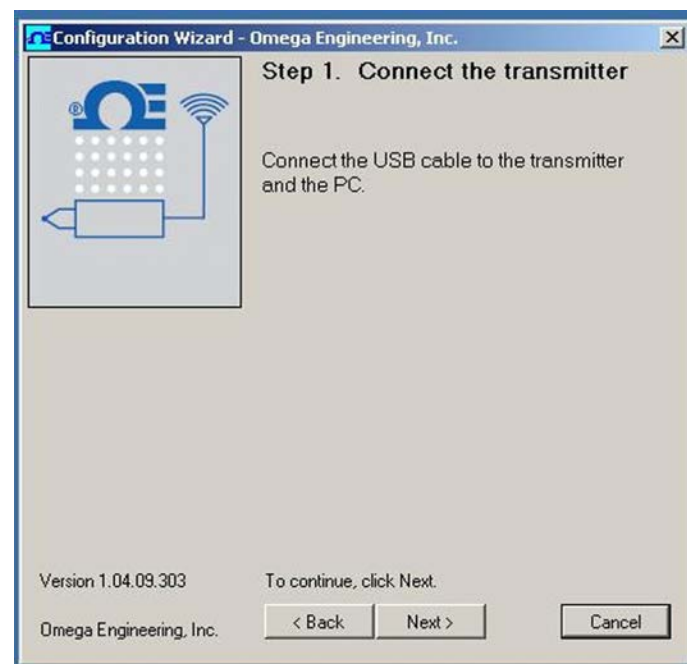


Figure 11. Utility Program - Connect To Transmitter Screen

If you have not already connected your End Device to a USB port on your PC you must do this now before continuing. After your unit has been connected click the "Next >" button to proceed and continue setting up your unit.

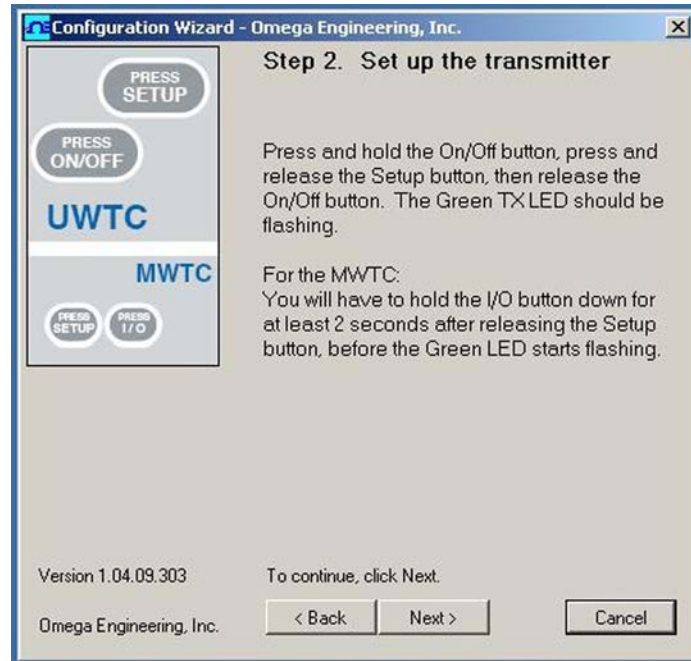


Figure 12. Utility Program - Setup Transmitter Screen

If you have not already placed your End Device into the "Setup" mode you should do this now before continuing. After your unit has been placed into the "Setup" mode click the "Next >" button to proceed and continue setting up your unit.

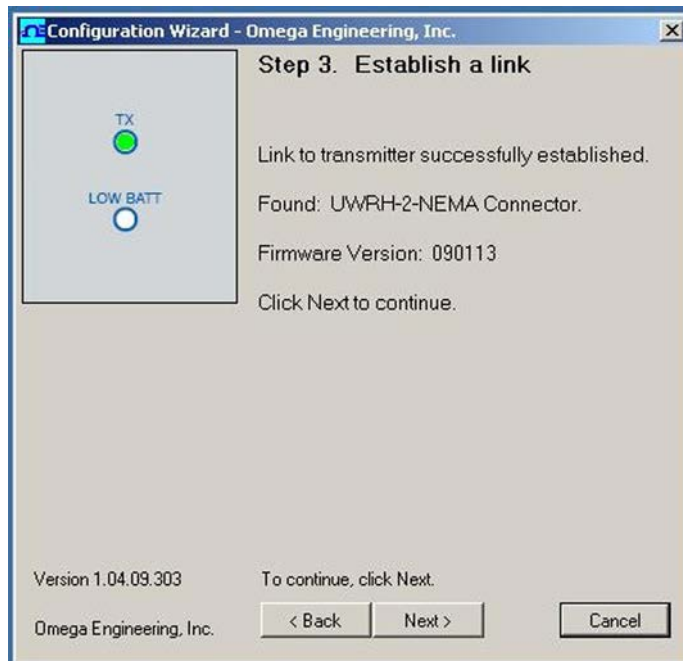


Figure 13. Utility Program - Establish Link Screen

After successful communication between your connector/transmitter has been established you can click the "Next >" button to proceed and continue setting up your connector/transmitter. If you did not receive this confirmation of proper communication you should click the "Back" button to try connecting again.



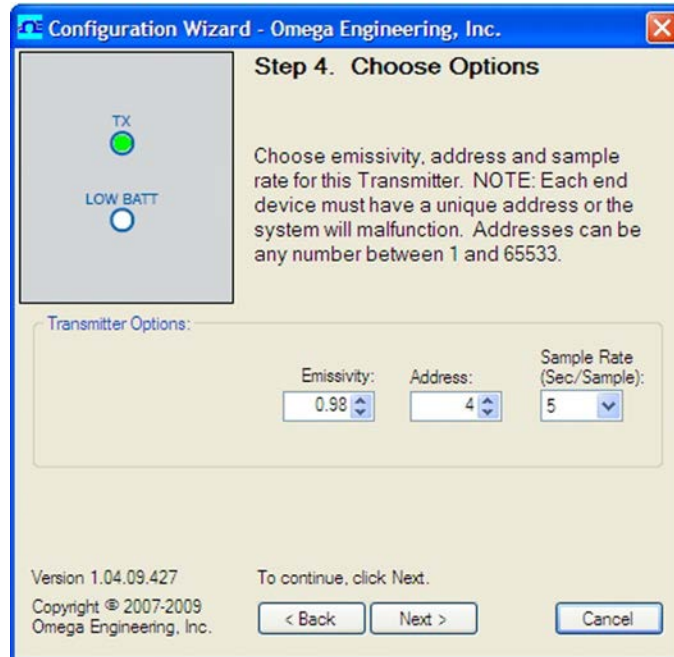


Figure 14. Utility Program - Choose Options Screen

From this screen you will select the main operating settings for your end device. (Note: Each end device must have a different address number for proper operation). After making your selections click the "Next >" button to proceed and program your settings into your unit.



Figure 15. Utility Program - Send To Transmitter Screen

Congratulations! You have successfully programmed your end device. After your unit has been programmed click the "Finish" button to close the utility program.



## 5.2 Mounting, Installation and Antenna Connection

### 5.2.1 Mounting Bracket Installation, UWRH-2

A mounting bracket kit has been supplied with your connector/transmitter. The diagram below shows dimensions and how to install your mounting bracket.

**NOTE:**

Use the plate as a template to mark the location of the mounting holes you need to drill before installing the mounting kit onto the connector transmitter.

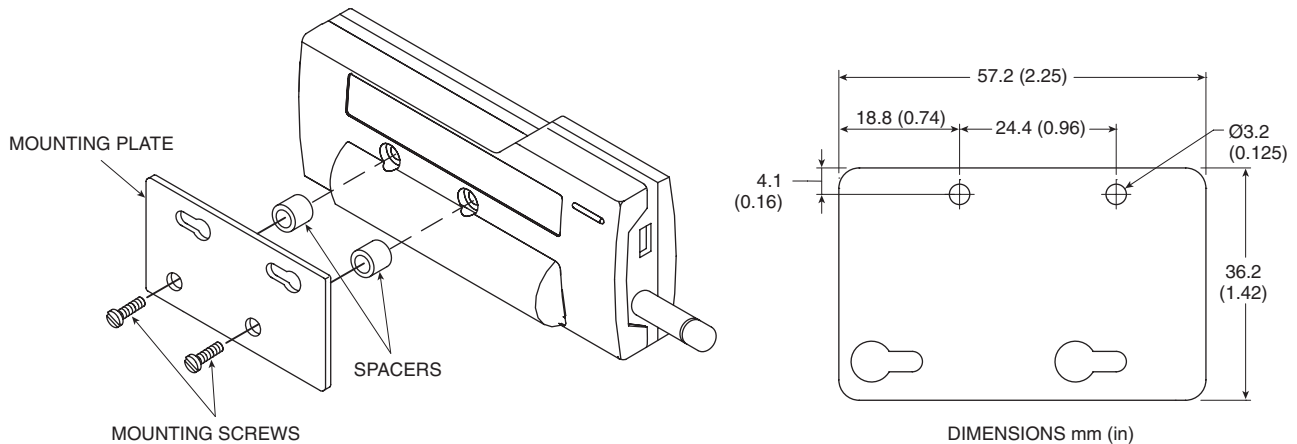


Figure 16A. Mounting, UWRH-2

### 5.2.2 Enclosure Mounting, UWRH-2-NEMA

The UWRH-2-NEMA transmitter comes equipped with mounting holes within the case. The diagram below shows dimensions and how to install your mounting bracket.

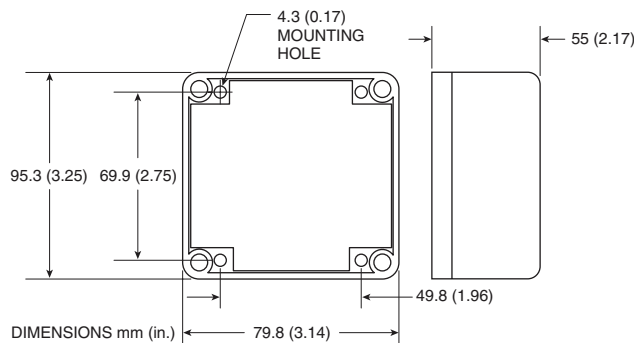


Figure 16B. Mounting, UWRH-2-NEMA

### 5.2.3 Installation

When installing your End Device it is important to position your device in such a way as to optimize the antenna location within what's known as the "Fresnel Zone".

The Fresnel Zone can be thought of as a football-shaped invisible tunnel between two locations that provides a path for RF signals between your End Device and your receiver.

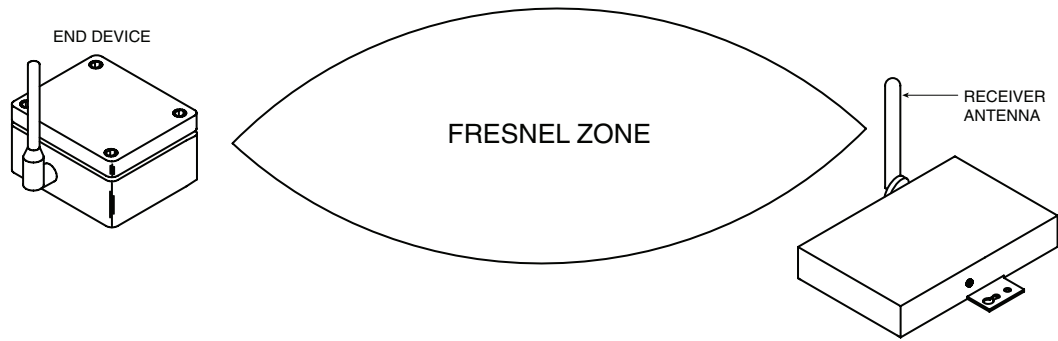


Figure 17. Fresnel Zone

In order to achieve maximum range, the football-shaped path in which radio waves travel must be free of all obstructions. Obstacles in the path (especially metal) will decrease the communication range between your End Device and receiver. Also, If the antennas are mounted just barely off the ground, over half of the Fresnel zone ends up being obstructed by the earth resulting in significant reduction in range. To avoid this problem, the antennas should be mounted high enough off of the ground so that the earth does not interfere with the central diameter of the Fresnel zone.

**NOTE:**

It is important to understand that the environment may change over time due to new equipment or machinery being installed, building construction, etc. If new obstacles exist between your End Device and receiver, the devices can be raised on one end or on both ends to hopefully clear the Fresnel Zone of obstructions.

**NOTE:**

No co-location with other radio transmitters is allowed. By definition, co-location is when another radio device or the device's antenna is located within 20 cm of your connector/transmitter and can transmit simultaneously with your unit.

**NOTE:**

Never install multiple End Devices within 20 cm or less from each other.

**NOTE:**

Never use your UWRH transmitter as a portable device. Your unit has been designed to be operated in a permanent installation only.

### 5.2.4 Antenna Connection

Your End Device has been shipped to you with a standard approved antenna.

**NOTE:**

Use of any other antenna than what's supplied with your End Device will void all FCC, IC and CE regulatory compliance.

## 5.3 Battery Replacement

### 5.3.1 Model UWRH-2

Your UWRH-2 transmitter is equipped with an "AA" size lithium battery. Omega Part Number: UWTC-BATT. To install a replacement battery, open the rear of the enclosure, as shown below.

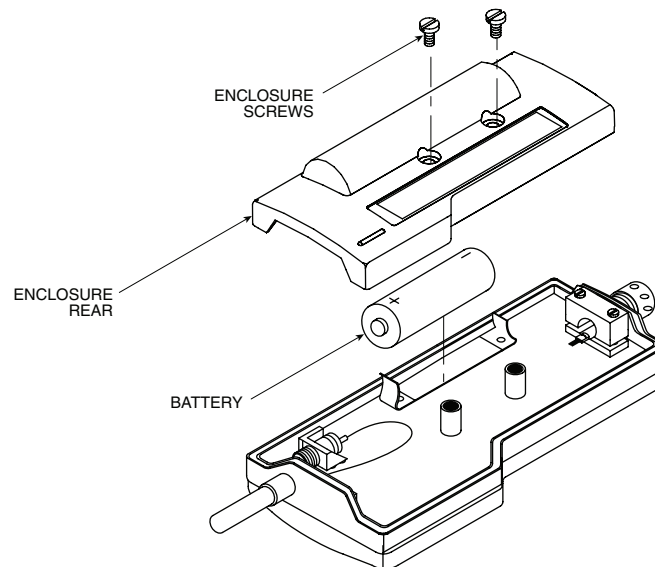


Figure 18A. Battery Replacement, UWRH-2

### 5.3.2 Model UWRH-2-NEMA

Your UWRH-2-NEMA Transmitter is equipped with a "C" size lithium power cell assembly. Omega Part Number: UWTC-BATT-C. To install a replacement battery assembly follow steps outlined here.

- Remove the two screws that secure the main circuit board assembly.
- Lift the circuit board just high enough to allow you to unplug the connector that attaches the battery assembly to the bottom of the circuit board.
- Remove the old power cell.
- Install your new battery assembly into the housing in the same position as the old battery was located.
- Connect the battery assembly connector to the mating connector on the bottom of the circuit board.

F. Install the circuit board back into the housing and secure with the two screws you removed in step one.

G. Installation complete.

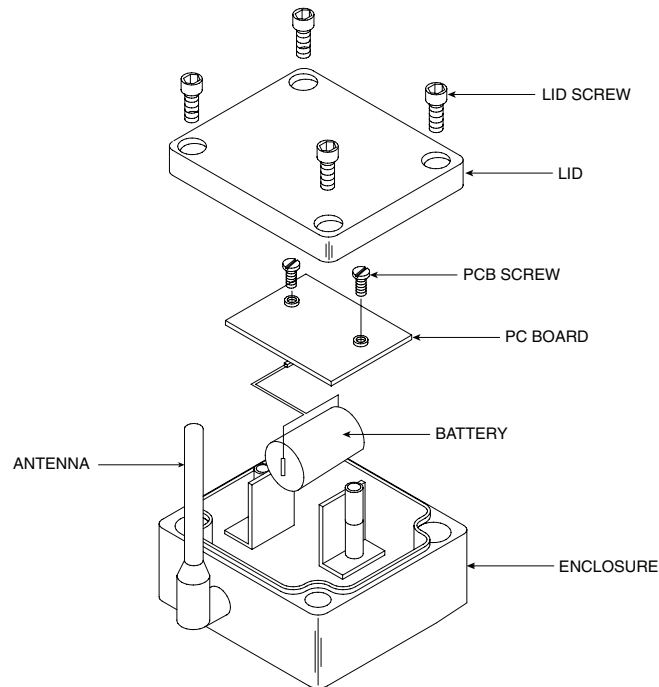


Figure 18B. Battery Replacement, UWRH-2-NEMA

**CAUTION:**

Installing your end device in an application where the unit will be exposed to ambient temperatures above or below the operating limits specified in this manual will damage your unit and cause the unit to malfunction and produce incorrect operation.

### 5.3.3 Antenna Connection

Your receiver has been shipped to you with a high gain antenna already attached.

In some cases, a short RF cable may be used to connect an antenna to your end device. Please note that RF extension cables will always add some loss to the transmitting signal strength. The longer the cable the more signal will be lost over that cable. Because of this the length of the cable should be kept as short as possible.

**NOTE:**

Use of any other antenna than what's supplied with your End Device will void all FCC, IC and CE regulatory compliance.

**NOTES:**

## Section 6 - System Operation

### 6.1 Introduction

Compared to wired systems, a wireless system provides much simpler installation. Based on the physical principle of the propagation of radio waves, certain basic conditions should be observed. The following simple recommendations are provided to ensure proper installation and correct operation of your wireless system.

### 6.2 RF Communication Basics

The models UWRH-2 and UWRH-2-NEMA send wireless transmissions to a receiver. The receiver checks the incoming data for accuracy and processes this data for use by the measurement software on your PC. Radio signals are electromagnetic waves, hence the signal becomes weaker the further it travels. While radio waves can penetrate some solid materials like a wall, they are dampened more than when a direct line-of-sight between the transmitting and receiving antenna exist.

### 6.3 Basic System Overview

A basic wireless RH system is comprised of only two main components; a signal conditioner with a built-in battery powered 2.4 GHz radio transmitter, and a USB powered 2.4 GHz radio receiver.

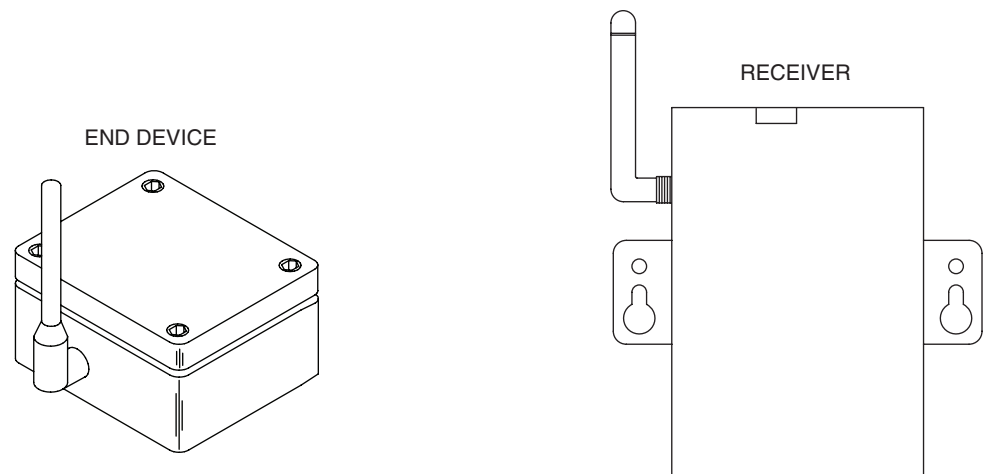


Figure 19. End Device/Receiver

**NOTE:**

Up to 48 end devices can be used with one receiver.

## 6.4 Environment/Operating Conditions

### 6.4.1 Environment (UWRH-2)

Omega's UWRH-2 transmitters have been designed to be fixed, mounted and operated in a clean and dry indoor environment. Care should be taken to prevent the components of your wireless system from being exposed to toxic chemicals and extreme cold or hot temperature that are outside the specifications listed in this manual.

### 6.4.2 Environment (UWRH-2-NEMA)

The UWRH-2-NEMA transmitters have been designed to be fixed and operated in both indoor and outdoor environments; they are also weather-resistant. Care should be taken to prevent the components of your wireless system from being exposed to toxic chemicals and extreme cold or hot temperature that are outside the specifications listed in this manual.

### 6.4.3 Operating Conditions

The following is a list of basic good practices you should apply when operating your wireless system.

- Never operate your wireless device or receiver outside the recommended environmental limits specified in this manual.
- Never operate your wireless end device or receiver in flammable or explosive environments.
- Never use your wireless end device or receiver in medical, nuclear or other dangerous applications where an interruption of readings can cause damage or harm.
- Never operate your end device or receiver with any other battery or power source than what's specified in this manual or on the battery compartment label.  
Note: For the UWRH-2 only, the device can be externally powered via USB using any USB port on a PC or USB charging.
- No co-location with other radio transmitters is allowed. By definition, co-location is when another radio device or its antenna is located within 20 cm of your end device and can transmit simultaneously with your end device.
- Never install end devices within 20 cm or less from each other.
- Never use your end device as a portable device. Your unit has been designed to be operated in a permanent installation.
- Never install and/or operate your end device closer than 20 cm to nearby persons.
- Never operate your end device with any other antenna than what is supplied or listed here in this manual for approved use.

## 6.5 Transmit Rate vs. Battery Life

Many factors such as ambient temperature conditions and transmitting rate can have a big effect on the life of the battery used in your end device. Transmitting data places a big demand of the battery in your unit. The transmit rate is the single most contributing factor in the life of your battery. The slower the transmit rate you set, the longer the battery in your device will last. The table below give some estimates on how long the battery should last vs. the transmit rate you selected when you setup your end device and under normal operating conditions.

For Model: UWRH-2

Transmit Time	Estimated Battery Life
1 Sample/2 Seconds	6 days
1 Sample/3 Seconds	9 days
1 Sample/5 Seconds	15 days
1 Sample/10 Seconds	30 days
1 Sample/15 Seconds	45 days
1 Sample/30 Seconds	90 days
1 Sample/45 Seconds	135 days
1 Sample/60 Seconds	180 days

For Model: UWRH-2-NEMA

Transmit Time	Estimated Battery Life
1 Sample/2 Seconds	235 days
1 Sample/3 Seconds	341 days
1 Sample/4 Seconds	438 days
1 Sample/5 Seconds	530 days
1 Sample/10 Seconds	909 days
1 Sample/15 Seconds	1193 days
1 Sample/30 Seconds	1735 days
1 Sample/45 Seconds	2046 days
1 Sample/60 Seconds	2246 days
1 Sample/75 Seconds	2387 days



## Section 7 – Service & Calibration

Your UWRH-2/UWRH-2-NEMA Wireless RH/Temp Transmitter has been built and factory calibrated to meet or exceed the specifications listed here in this manual. Information is provided below on how to have your unit serviced.

### 7.1 Service and Calibration

If any of your wireless system components require service or re-calibration, please call our Customer Service Department at 1-800-622-2378 or 203-359-1660. They will assist you in arranging the return of your device. We can also be reached on the Internet at [www.omega.com](http://www.omega.com), e-mail: [cservice@omega.com](mailto:cservice@omega.com)

## Section 8 – Specifications

<b>Temperature Range:</b>	-17 to 49°C (2 to 120°F)
<b>Accuracy:</b>	±1°C (±1.8°F)
<b>Relative Humidity Range:</b>	2 to 98% RH
<b>Accuracy:</b>	±2.5% RH from 20 to 80% RH; ±3.5% RH below 20 and above 80% RH@ 25°C (76°F)
<b>Operating Environment:</b>	-10 to 70°C (14 to 158°F)
<b>Computer Interface:</b>	USB (one interface cable included with receiver)
<b>Transmit Sample Rate:</b>	Programmable from 1 sample / every 90 seconds to 1 sample / every 2 seconds
<b>Radio Frequency (RF)</b>	
<b>Transceiver Carrier:</b>	ISM 2.4 GHz, direct sequence spread spectrum.
<b>RF Output Power:</b>	
<b>UWRH-2-NEMA:</b>	10dBm, (10 mW)
<b>UWRH-2-NEMA-USCA:</b>	18dBm, (63 mW)
<b>Range of RF Link:</b>	
<b>UWRH-2-NEMA:</b>	Up to 90m (300'): Outdoor line of sight Up to 45m (130'): Indoor / Urban
<b>UWRH-2-NEMA-USCA:</b>	Up to 1219m (4000'): Outdoor line of sight Up to 82m (270'): Indoor / Urban
<b>RF Data Packet Standard:</b>	IEEE 802.15.4
<b>Software (Included Free):</b>	Compatible with 2000 through Windows 11
<b>Battery:</b>	One 3.6V lithium, UWRH-2: "AA" UWRH-2-NEMA: "C" (included)
<b>Battery Life (typical):</b>	(3 year) 1 sample / minute reading rate @ 25°C (77°F)

For the UWRH-2 only, the device can be externally powered via USB using any USB port on a PC or USB charging device.

<b>Data Transmitted to Host:</b>	Relative humidity, ambient temperature, RF transmit strength and battery status
<b>Enclosure:</b>	
<b>UWRH-2:</b>	ABS Plastic
<b>UWRH-2-NEMA:</b>	NEMA 4X (IP65) Polycarbonate
<b>Dimensions:</b>	
<b>UWRH-2:</b>	100 L x 50 W x 25 mm H (without antenna) (4 x 2 x 1")
<b>UWRH-2-NEMA:</b>	80 L x 82 W x 50 mm (3.15 x 3.22 x 1.97")

## Section 9 – Approvals, Regulatory Compliance

---

**NOTE:**

All approvals outlined in this manual are based on testing that was done with antennas that are supplied with your UWTC Series System Components. Removing and or installing a different antenna will void the product compliance demonstrated in these documents.

---

### 9.1 FCC (Domestic Use)

Before 2025:

For United States: FCC ID: OUR-XBEEPRO

For Canada: IC #4214A-XBEEPRO

After 2025:

For United States: FCC ID: MCQ-S2CTH

For Canada: IC #1846-S2CTH

This device complies with Part 15 of the FCC rules. Operation is subject to the following two conditions: 1.) This device may not cause harmful interference. 2.) This device must accept any interference received, including interference that may cause undesired operation.

---

**WARNING:**

To satisfy FCC RF exposure requirements for mobile transmitting devices, a separation distance of 20 cm or more should be maintained between the antenna of this device and persons during device operation. To ensure compliance, operations at closer than this distance is not recommended. The antenna used for this transmitter must not be co-located in conjunction with any other antenna or transmitter.

---

### 9.2 FCC International Usage

---

**NOTE:**

It is your (the user's) responsibility to insure that these products are operated within the guidelines here in this manual and in conformance with all local, state, federal or national regulations and laws of the country they are being operated in.

**Transmitting Power** —Your wireless end device has been designed, manufactured and tested so that the transmitting power of your connector transmitter will not exceed 10 dBm 10 mW. This excludes USCA versions of the units.

---



**NOTES:**



## **UWRH-2/UWRH-2-NEMA**

### **Wireless Humidity/Temperature Transmitter**

---

#### **NOTES:**



**[dwyeromega.com](http://dwyeromega.com)**

**M4432-RH/1025**

