

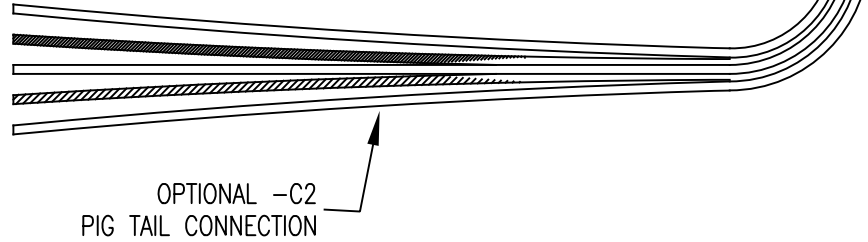
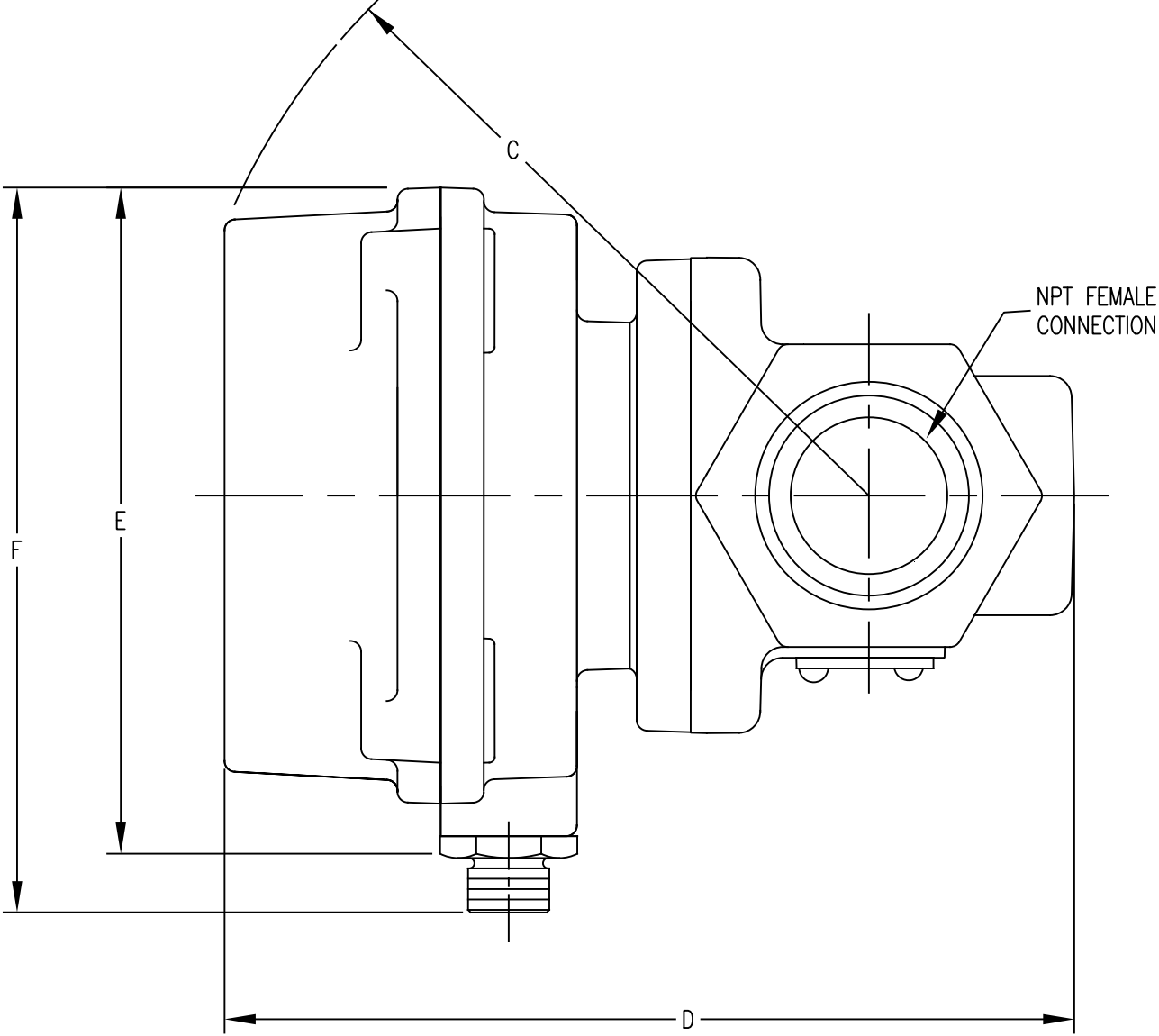
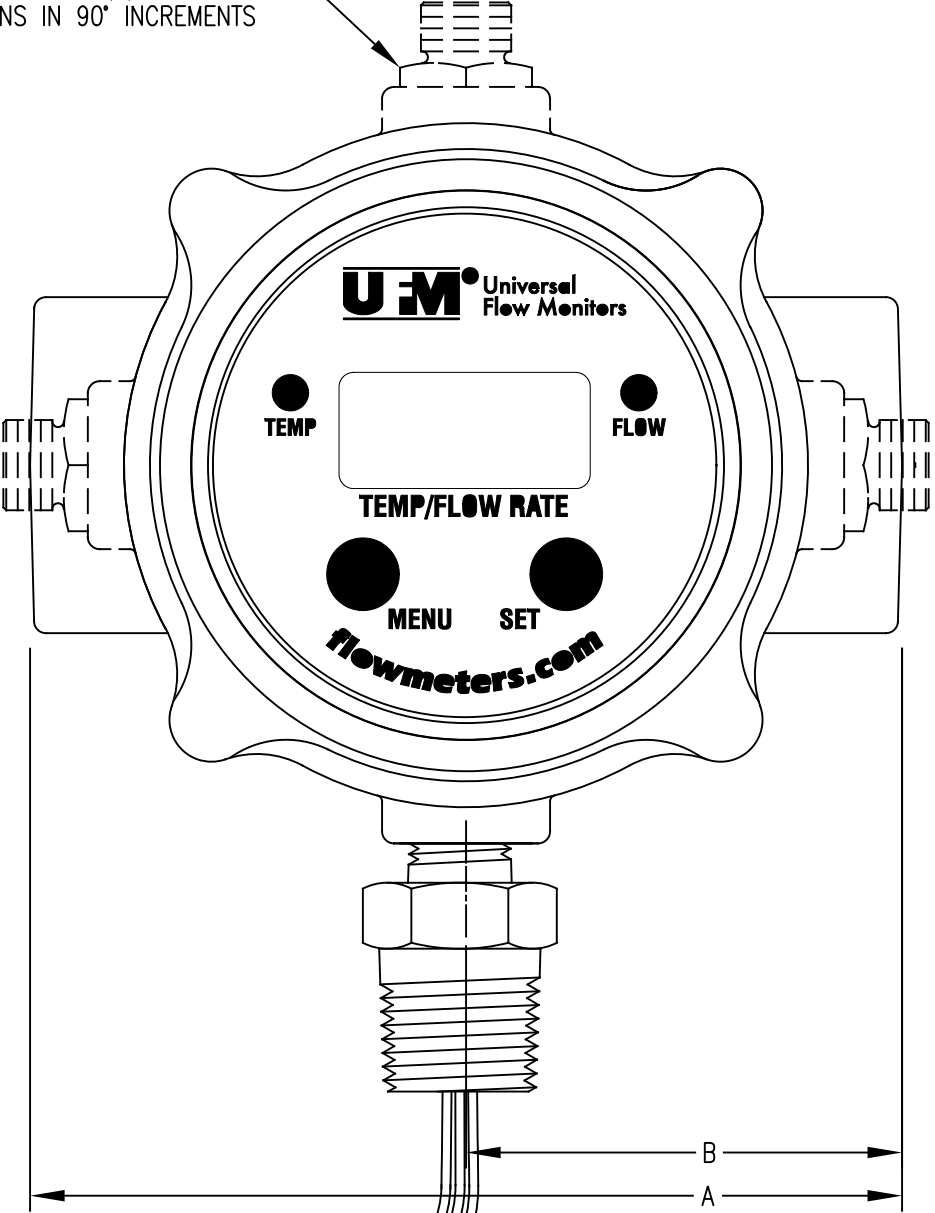
CP2, CP3, & CP4

SCALE 1:1

Ⓢ = CRITICAL DIMENSION
STANDARD TOLERANCES UNLESS NOTED:
ALL DECIMAL DIMENSIONS ± .005
ALL ANGLES ± 1°

| | | | | | |
|--|---------------------------|---------|----------|---|---|
| | | | DATE | NAME | MATERIAL |
| | | | 05-06-22 | BULLETIN ARTWORK CP/CN/CT/CX COOLPOINT VORTEX SHEDDING FLOWMETER SHEET 1 OF 9 (FOR REFERENCE ONLY) | |
| | | | DWN BY | | FINISH |
| | | | KAS | | |
| | | | CHKD | | |
| 0 | INITIAL RELEASE ND-008147 | | APPD | | DWYER INSTRUMENTS, LLC. MICHIGAN CITY, INDIANA 46360 U.S.A. |
| NO. | CHANGES | BY/DATE | | | |
| NOTICE: This drawing and the principles and elements of design embodied therein are the exclusive property of DWYER INSTRUMENTS and are not to be communicated, disclosed, reproduced or used except as previously authorized in writing by such company and must not be submitted to outside parties for examination without the written consent of said company. | | | | | 4 FR. NO. U700002-00 |

CONTROL BOX CAN BE ROTATED
TO ANY OF (4) DETENTED
POSITIONS IN 90° INCREMENTS



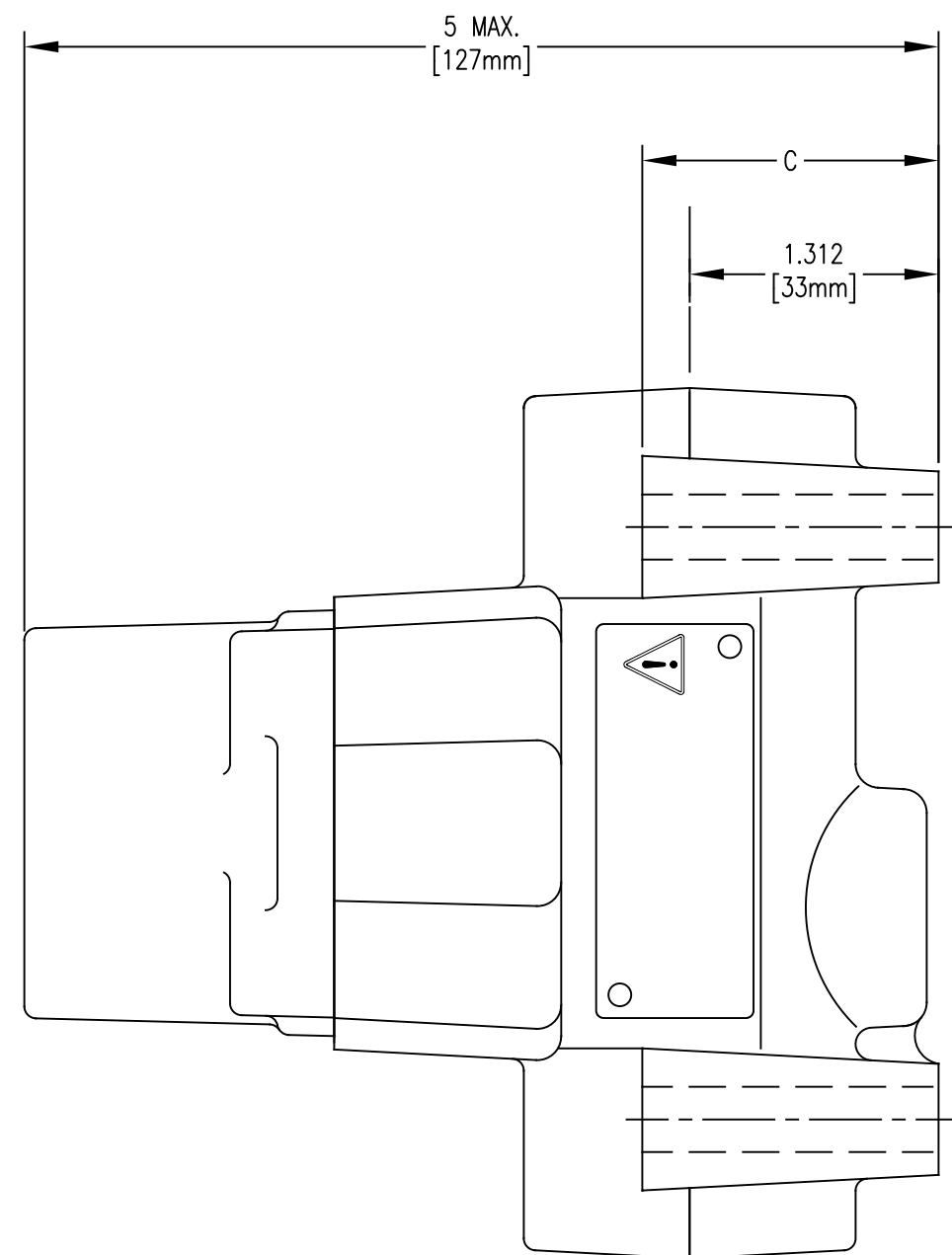
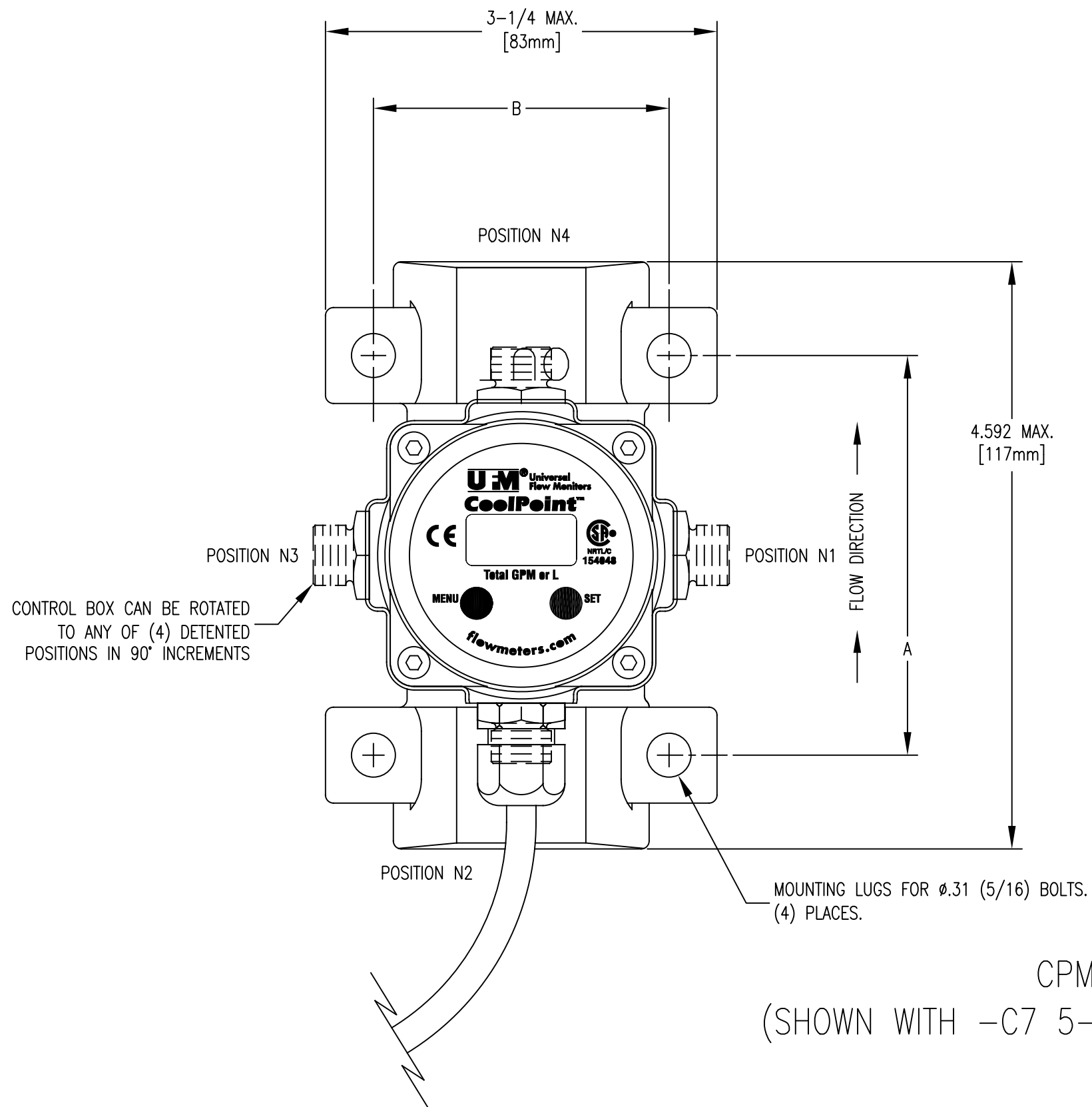
CT
(SHOWN WITH -C2 PIG TAIL CONNECTION)

SCALE 1:1

Ⓢ = CRITICAL DIMENSION
STANDARD TOLERANCES UNLESS NOTED:
ALL DECIMAL DIMENSIONS ± .005
ALL ANGLES ± 1°

| | | |
|------------------|---|---|
| DATE 05-06-22 | NAME BULLETIN ARTWORK CP/CN/CT/CX COOLPOINT VORTEX SHEDDING FLOWMETER (FOR REFERENCE ONLY) SHEET 2 OF 9 | MATERIAL |
| DWN BY KAS | | FINISH |
| CHKD | | DWYER INSTRUMENTS, LLC. MICHIGAN CITY, INDIANA 46360 U.S.A. |
| APPD | | |

NOTICE: This drawing and the principles and elements of design embodied therein are the exclusive property of DWYER INSTRUMENTS and are not to be communicated, disclosed, reproduced or used except as previously authorized in writing by such company and must not be submitted to outside parties for examination without the written consent of said company.



CPM8
(SHOWN WITH -C7 5-PIN FEMALE CABLE)

SCALE 1:1

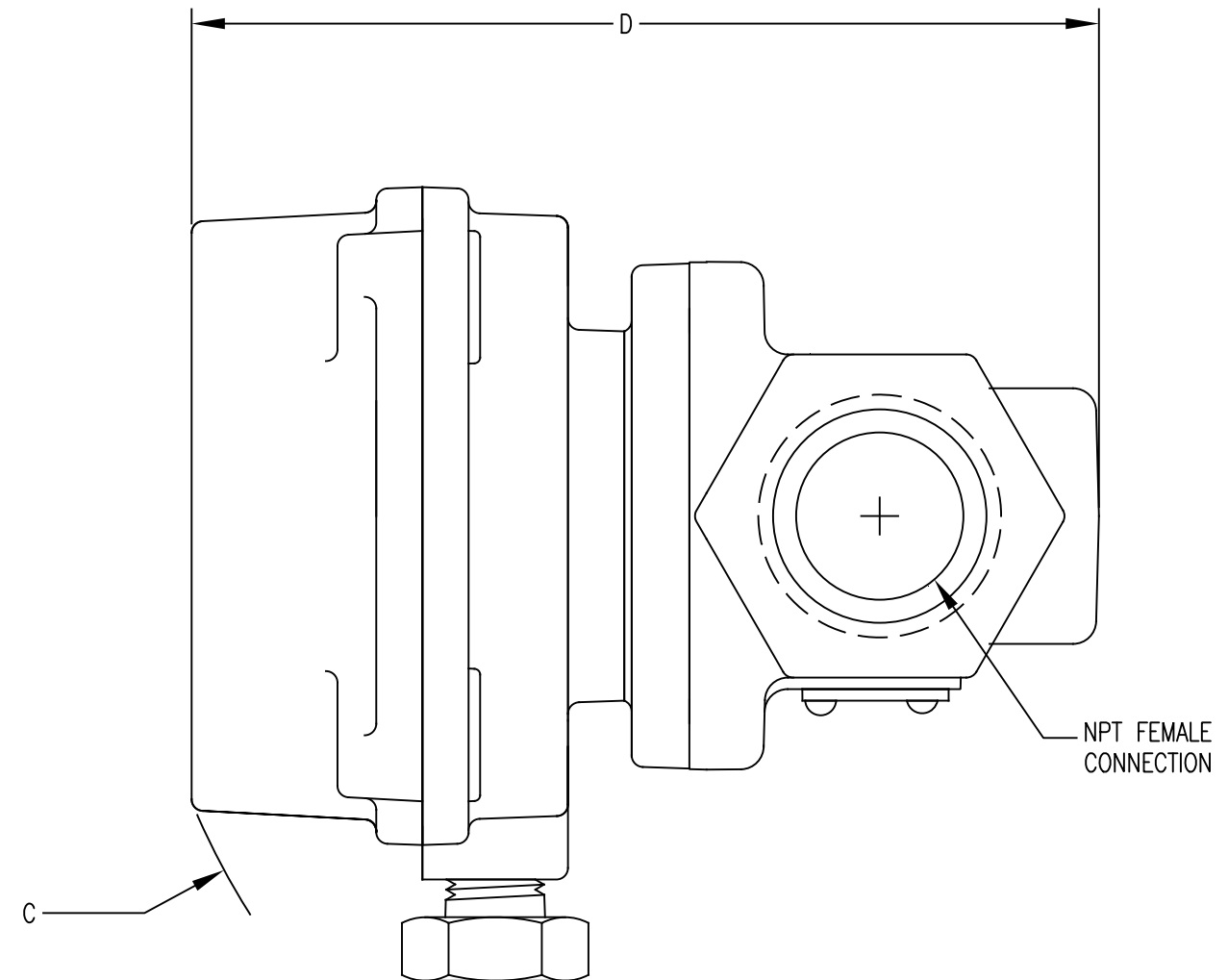
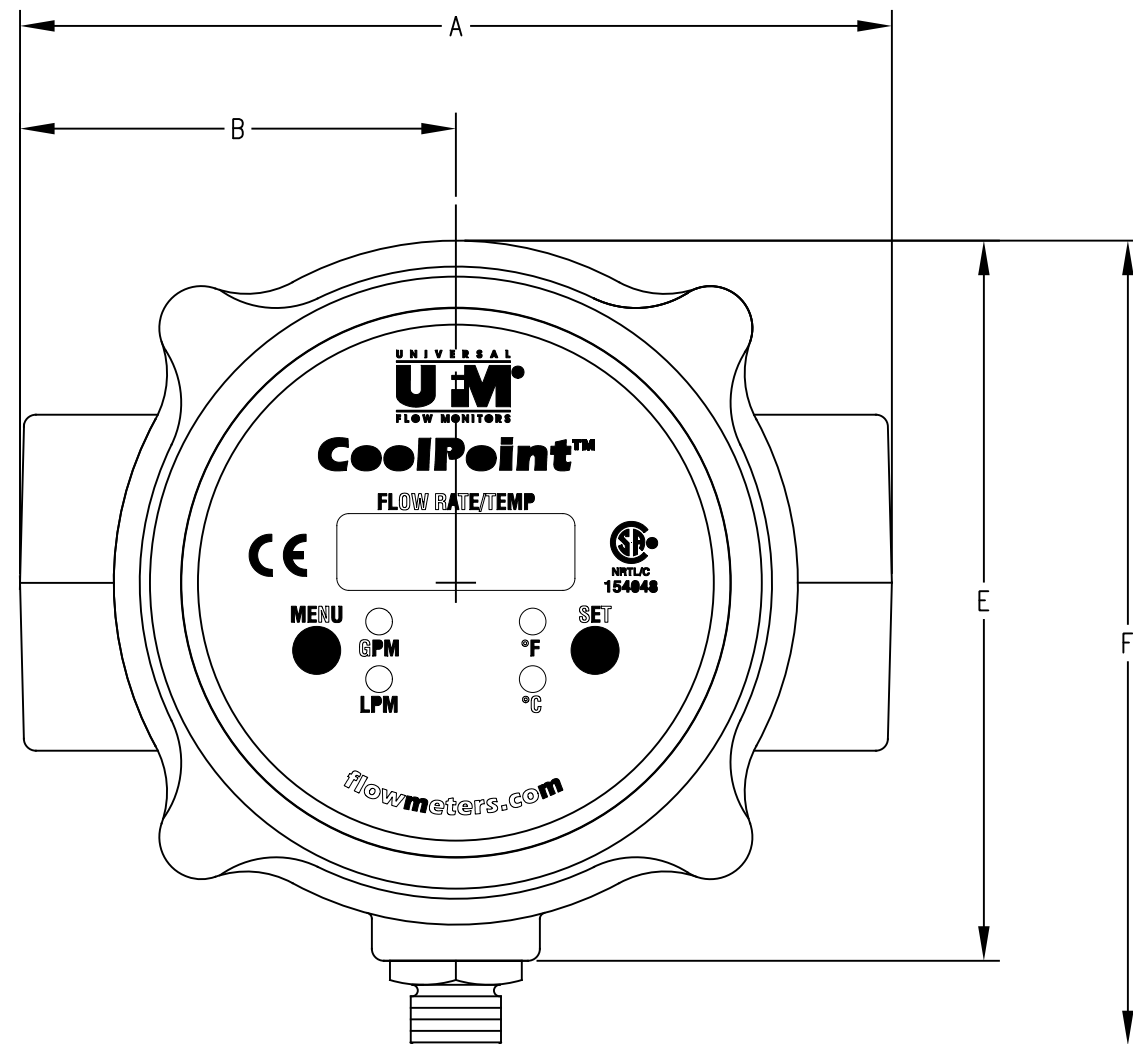
Ⓢ = CRITICAL DIMENSION
STANDARD TOLERANCES UNLESS NOTED:
ALL DECIMAL DIMENSIONS ± .005
ALL ANGLES ± 1°

| | | |
|------------------|---|---|
| DATE 05-06-22 | NAME BULLETIN ARTWORK CP/CN/CT/CX COOLPOINT VORTEX SHEDDING FLOWMETER (FOR REFERENCE ONLY) SHEET 3 OF 9 | MATERIAL |
| DWN BY KAS | | FINISH |
| CHKD | | DWYER INSTRUMENTS, LLC. MICHIGAN CITY, INDIANA 46360 U.S.A. |
| APPD | | |

NOTICE: This drawing and the principles and elements of design embodied therein are the exclusive property of DWYER INSTRUMENTS and are not to be communicated, disclosed, reproduced or used except as previously authorized in writing by such company and must not be submitted to outside parties for examination without the written consent of said company.

4

FR. NO. U700002-00



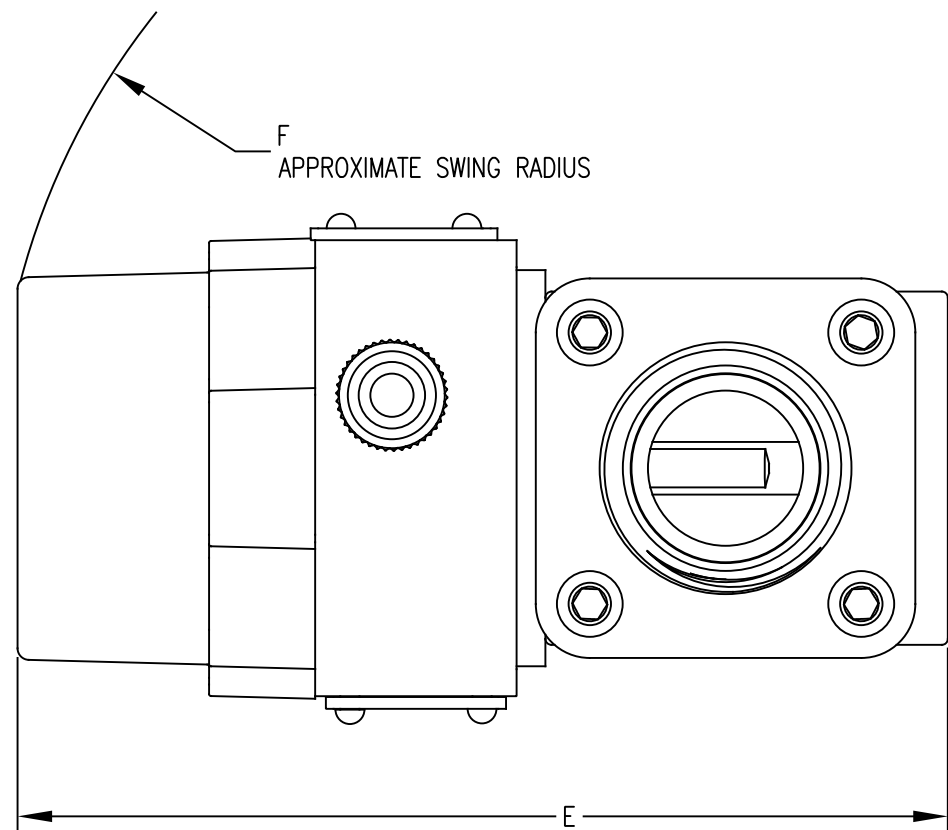
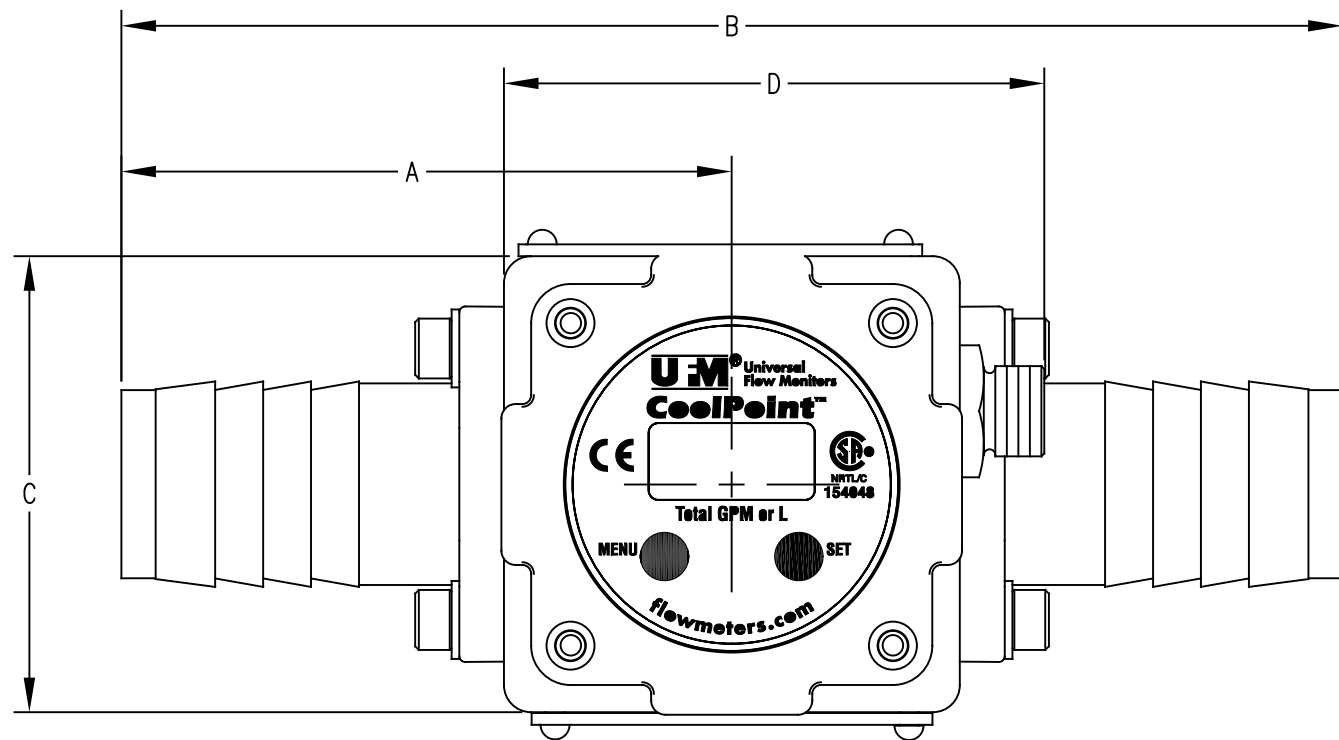
CP/CN6, CP/CN8, CN12 & CN16

SCALE 1:1

Ⓢ = CRITICAL DIMENSION
STANDARD TOLERANCES UNLESS NOTED:
ALL DECIMAL DIMENSIONS ± .005
ALL ANGLES ± 1°

| | | |
|------------------|---|---|
| DATE 05-06-22 | NAME BULLETIN ARTWORK CP/CN/CT/CX COOLPOINT VORTEX SHEDDING FLOWMETER (FOR REFERENCE ONLY) SHEET 4 OF 9 | MATERIAL |
| DWN BY KAS | | FINISH |
| CHKD | | DWYER INSTRUMENTS, LLC. MICHIGAN CITY, INDIANA 46360 U.S.A. |
| APPD | | |

NOTICE: This drawing and the principles and elements of design embodied therein are the exclusive property of DWYER INSTRUMENTS and are not to be communicated, disclosed, reproduced or used except as previously authorized in writing by such company and must not be submitted to outside parties for examination without the written consent of said company.



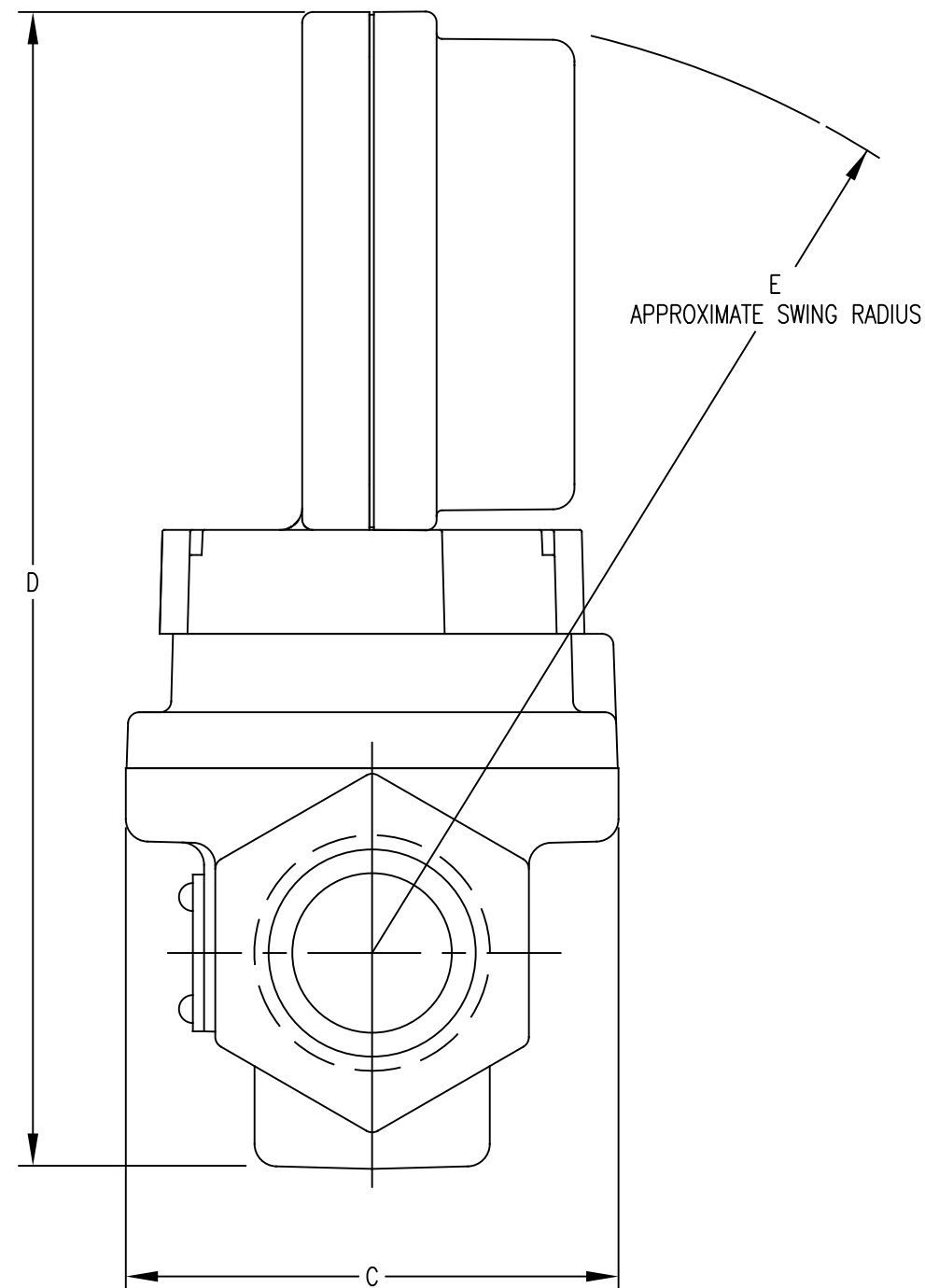
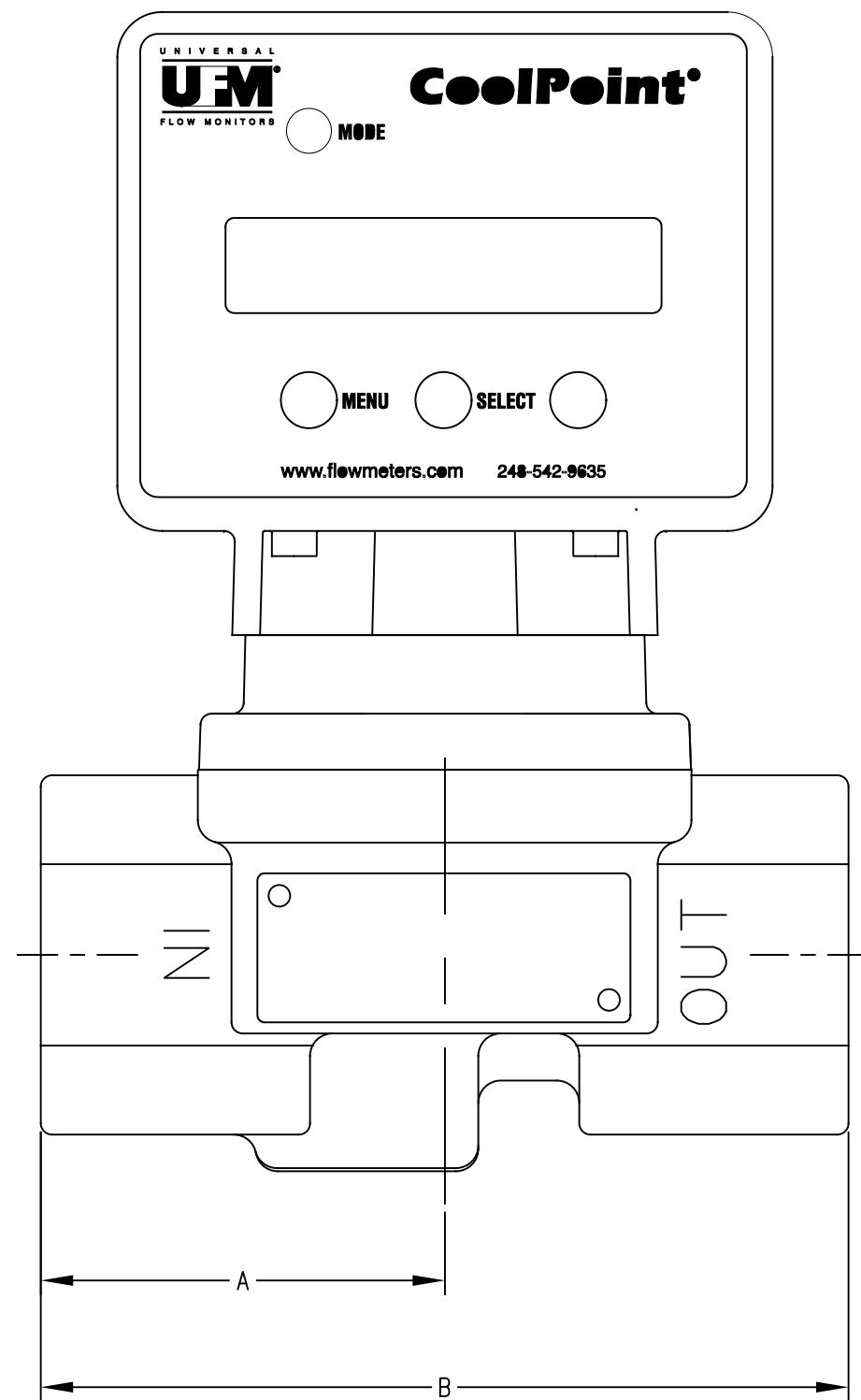
CX8-M7

SCALE 1:1

Ⓢ = CRITICAL DIMENSION
STANDARD TOLERANCES UNLESS NOTED:
ALL DECIMAL DIMENSIONS ± .005
ALL ANGLES ± 1°

| | | |
|------------------|---|---|
| DATE 05-06-22 | NAME BULLETIN ARTWORK CP/CN/CT/CX COOLPOINT VORTEX SHEDDING FLOWMETER (FOR REFERENCE ONLY) SHEET 5 OF 9 | MATERIAL |
| DWN BY KAS | | FINISH |
| CHKD | | DWYER INSTRUMENTS, LLC. MICHIGAN CITY, INDIANA 46360 U.S.A. |
| APPD | | |

NOTICE: This drawing and the principles and elements of design embodied therein are the exclusive property of DWYER INSTRUMENTS and are not to be communicated, disclosed, reproduced or used except as previously authorized in writing by such company and must not be submitted to outside parties for examination without the written consent of said company.



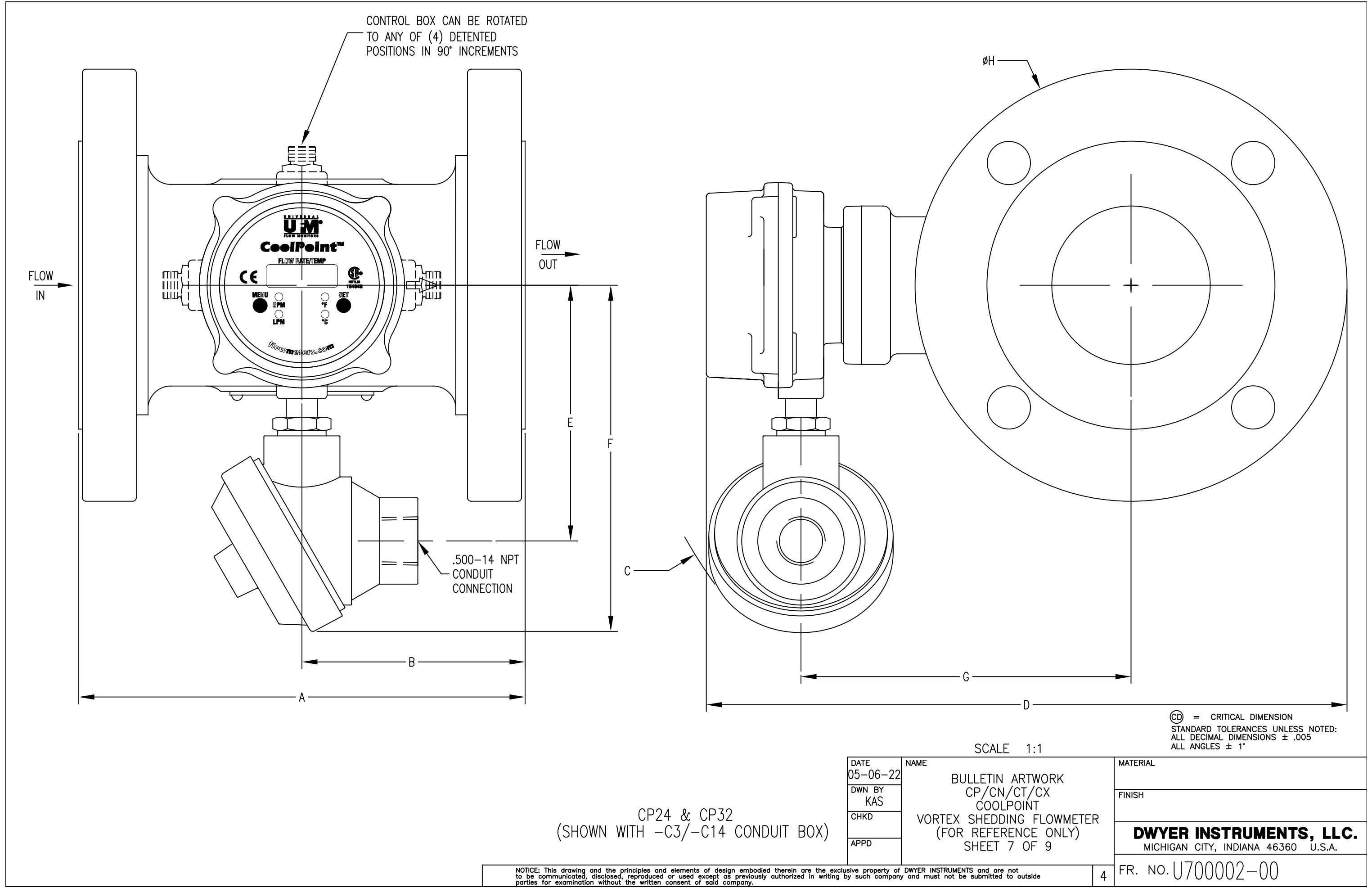
CPX-V8

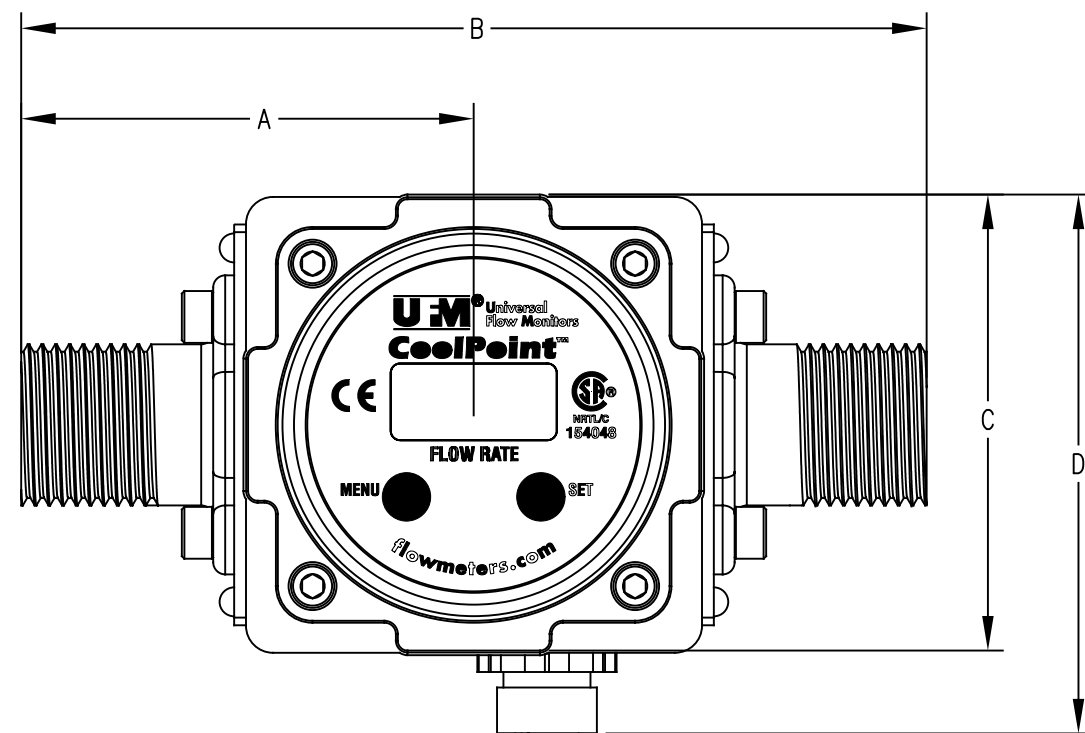
SCALE 1:1

Ⓢ = CRITICAL DIMENSION
STANDARD TOLERANCES UNLESS NOTED:
ALL DECIMAL DIMENSIONS ± .005
ALL ANGLES ± 1°

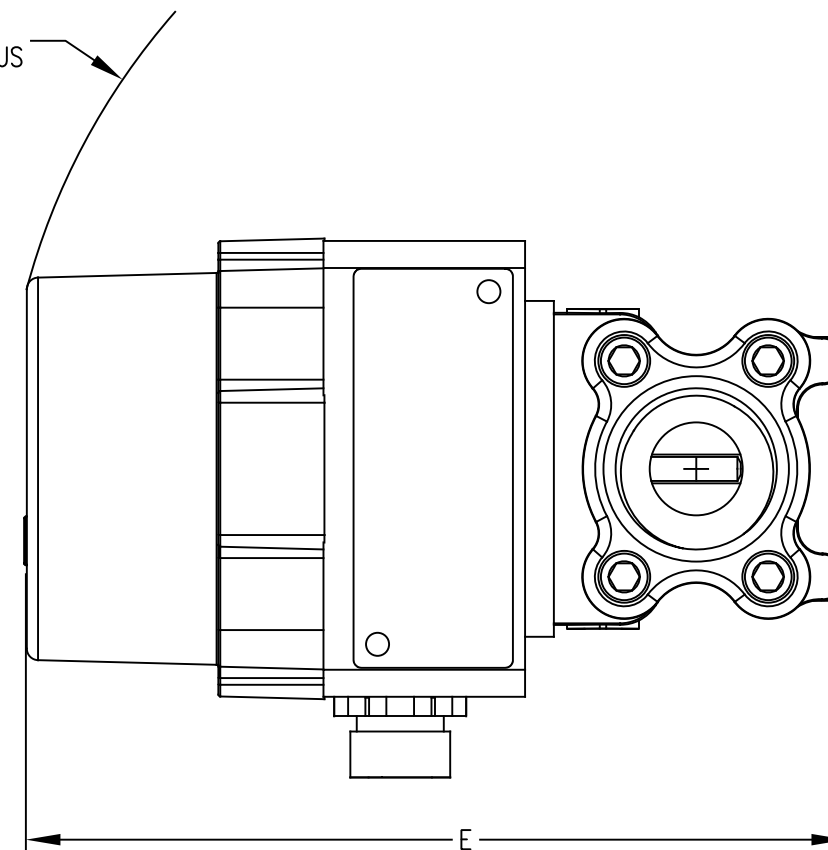
| | | |
|------------------|---|---|
| DATE 05-06-22 | NAME BULLETIN ARTWORK CP/CN/CT/CX COOLPOINT VORTEX SHEDDING FLOWMETER (FOR REFERENCE ONLY) SHEET 6 OF 9 | MATERIAL |
| DWN BY KAS | | FINISH |
| CHKD | | DWYER INSTRUMENTS, LLC. MICHIGAN CITY, INDIANA 46360 U.S.A. |
| APPD | | |

NOTICE: This drawing and the principles and elements of design embodied therein are the exclusive property of DWYER INSTRUMENTS and are not to be communicated, disclosed, reproduced or used except as previously authorized in writing by such company and must not be submitted to outside parties for examination without the written consent of said company.





F
APPROXIMATE SWING RADIUS



CXX-M5

SCALE 1:1

Ⓢ = CRITICAL DIMENSION
STANDARD TOLERANCES UNLESS NOTED:
ALL DECIMAL DIMENSIONS ± .005
ALL ANGLES ± 1°

| | | |
|------------------|---|---|
| DATE 05-06-22 | NAME BULLETIN ARTWORK CP/CN/CT/CX COOLPOINT VORTEX SHEDDING FLOWMETER (FOR REFERENCE ONLY) SHEET 8 OF 9 | MATERIAL |
| DWN BY KAS | | FINISH |
| CHKD | | DWYER INSTRUMENTS, LLC. MICHIGAN CITY, INDIANA 46360 U.S.A. |
| APPD | | |

NOTICE: This drawing and the principles and elements of design embodied therein are the exclusive property of DWYER INSTRUMENTS and are not to be communicated, disclosed, reproduced or used except as previously authorized in writing by such company and must not be submitted to outside parties for examination without the written consent of said company.

4

FR. NO. U700002-00

| SIZE | OPTION | A | B | C | D | E | F | G | H |
|---------------|------------------------|--------------------|---------------------|---------------------|---------------------|----------------------|---------------------|------------------|----------------|
| CT2-CT8 | STANDARD | 4-1/2 [114.3] | 2-1/4 [57.15] | 4-3/64 [102.62] | 4-59/64 [124.97] | 3-3/4 [95.25] | 4-3/16 [106.43] | | |
| CT12, CT16 | | 6-3/4 [171.45] | 3-3/8 [85.6] | 4-23/32 [119.63] | 6-9/64 [155.96] | 3-3/4 [95.25] | 4-3/16 [106.43] | | |
| CP2-V8 | | 1-53/64 [46.48] | 3-21/32 [92.71] | 2-3/8 [60.2] | 5-29/32 [50.11] | 4-61/64 [125.73] | | | |
| CP3-V8 | | 2-1/4 [57.15] | 4-1/2 [114.3] | 2-3/4 [67.85] | 6-7/16 [163.58] | 5-17/64 [133.6] | | | |
| CP4-V8 | | 3-3/8 [85.85] | 6-3/4 [171.45] | 2-7/8 [73.15] | 7-11/16 [195.33] | 6 [152.15] | | | |
| CP6-V8 | | 2-7/8 [73] | 2-1/2 [64] | 2 [51] | | | | | |
| CP8-V8 | | 3-1/4 [82.55] | 1-11/64 [41.15] | 3-1/4 [82.55] | 4-5/64 [103.38] | 2-15/64 [59.44] | 2-49/64 [70.36] | | |
| CP12-V8 | | 4-1/2 [114.3] | 2-1/4 [57.15] | 3-35/64 [90.17] | 4-39/64 [116.84] | 2-3/4 [69.85] | 3-3/16 [81.03] | | |
| CP16-V8 | C1 AND C2 OPTIONS | 4-1/2 [114.3] | 2-1/4 [57.15] | 4-3/64 [102.62] | 4-59/64 [124.97] | 3-3/4 [95.25] | 4-3/16 [106.43] | | |
| CP6, CP8 | | 6-3/4 [171.45] | 3-3/8 [85.6] | 4-1/4 [107.7] | 5-55/64 [148.59] | 2-7/8 [73.15] | 3-1/4 [82.55] | | |
| CN12, CN16 | | 7-3/4 [196.85] | 3-7/8 [98.55] | 8-29/32 [226] | 11-1/8 [283] | 11-1/8 [282.7] | 7-1/2 [190.5] | 5-47/64 [146] | 7-1/2 [191] |
| CP24 | | 10-3/4 [273.05] | 5-3/5 [136.65] | 9-15/32 [240] | 12-37/64 [319] | 12-37/64 [319.28] | 9 [228.6] | 6-7/16 [163] | 9 [229] |
| CT24 | | 3-1/4 [82.55] | 1-11/64 [41.15] | 5-13/32 [137.16] | 4-5/64 [103.38] | 2-15/64 [59.44] | 6-13/32 [162.81] | | |
| CN6, CN8 | | 4-1/2 [114.3] | 2-1/4 [57.15] | 5-11/16 [144.53] | 4-39/64 [116.84] | 2-3/4 [69.85] | 6-51/64 [172.47] | | |
| CP6, CP8 | | 4-1/2 [114.3] | 2-1/4 [57.15] | 6-33/64 [165.61] | 4-59/64 [124.97] | 3-3/4 [95.25] | 7-51/64 [106.43] | | |
| CN12, CN16 | | 6-3/4 [171.45] | 3-3/8 [85.6] | 6 [152.4] | 5-55/64 148.59] | 2-7/8 [73.15] | 6-55/64 [173.99] | | |
| CP12, CP16 | C3 = CONDUIT BOX | 6-3/4 [171.45] | 3-3/5 [85.6] | 6-7/8 [174.5] | 6-9/64 [155.96] | 3-3/4 [95.25] | 7-51/64 [106.43] | | |
| CT2-CT8 | | 4-1/2 [114.3] | 2-1/4 [57.15] | 6-3/64 [165.61] | 4-59/64 [124.97] | 3-3/4 [95.25] | 7-51/64 [197.87] | | |
| CT12, CT16 | | 6-3/4 [171.45] | 3-3/8 [85.6] | 6-23/32 [174.5] | 6-9/64 [155.96] | 3-3/4 [95.25] | 7-51/64 [197.87] | | |
| CP24 | | 7-3/4 [196.85] | 3-7/8 [98.55] | 8-29/32 [226] | 11-1/8 [283] | 11-1/8 [282.7] | 7-1/2 [190.5] | 5-47/64 [146] | 7-1/2 [191] |
| CT24 | | 10-3/4 [273.05] | 5-3/5 [136.65] | 9-15/32 [240] | 12-37/64 [319] | 12-37/64 [319.28] | 9 [228.6] | 6-7/16 [163] | 9 [229] |
| CP32 | | 3-3/16 [80.77] | 6-23/64 [161.54] | 2-1/2 [63.5] | 2-27/32 [72.14] | 4-21/32 [118.27] | 3-39/64 [91.69] | | |
| CT32 | | 2-1/2 [63.25] | 4-61/64 [125.73] | 2-13/32 [60.96] | 2-13/16 [71.37] | 4-21/32 [118.36] | 3-39/64 [91.69] | | |
| CX8 | | 1-63/64 [50.29] | 3-31/32 [100.84] | 2-13/32 [60.96] | 4-13/16 [122.17] | 4-9/32 [108.71] | 3-39/64 [91.69] | | |
| CX2, CX3, CX4 | M7 = HOSE BARB | 2-3/8 [60.45] | 4-3/4 [120.65] | 2-13/32 [60.96] | 2-13/16 [71.37] | 4-55/64 [123.19] | 3-13/16 [96.52] | | |
| | M8 = NYLON ENDCAPS | 2-1/2 [63.25] | 4-61/64 [125.73] | 2-13/32 [60.96] | 2-13/16 [71.37] | 4-21/32 [118.36] | 3-39/64 [91.69] | | |
| CX6, CX8 | T1 = NPT FEMALE THREAD | 2-3/8 [60.45] | 4-3/4 [120.65] | 2-13/32 [60.96] | 2-13/16 [71.37] | 4-55/64 [123.19] | 3-13/16 [96.52] | | |
| | T1 = NPT FEMALE THREAD | 2-3/8 [60.45] | 4-3/4 [120.65] | 2-13/32 [60.96] | 2-13/16 [71.37] | 4-55/64 [123.19] | 3-13/16 [96.52] | | |
| CX2, CX3, CX4 | T6 = NPT MALE THREAD | 2-3/8 [59.94] | 4-23/32 [119.89] | 2-23/64 [59.94] | 2-13/16 [71.37] | 4-9/32 [108.71] | 3-39/64 [91.69] | | |
| | T6 = NPT MALE THREAD | 3-5/16 [83.82] | 6-39/64 [167.89] | 2-13/32 [60.96] | 2-13/16 [71.37] | 4-55/64 [123.19] | 3-13/16 [96.52] | | |

SCALE 1:1

CD = CRITICAL DIMENSION
STANDARD TOLERANCES UNLESS NOTED:
ALL DECIMAL DIMENSIONS ± .005
ALL ANGLES ± 1°

| | | |
|------------------|---|---|
| DATE 05-06-22 | NAME BULLETIN ARTWORK CP/CN/CT/CX COOLPOINT VORTEX SHEDDING FLOWMETER (FOR REFERENCE ONLY) SHEET 9 OF 9 | MATERIAL |
| DWN BY KAS | | FINISH |
| CHKD | | DWYER INSTRUMENTS, LLC. MICHIGAN CITY, INDIANA 46360 U.S.A. |
| APPD | | |

NOTICE: This drawing and the principles and elements of design embodied therein are the exclusive property of DWYER INSTRUMENTS and are not to be communicated, disclosed, reproduced or used except as previously authorized in writing by such company and must not be submitted to outside parties for examination without the written consent of said company.